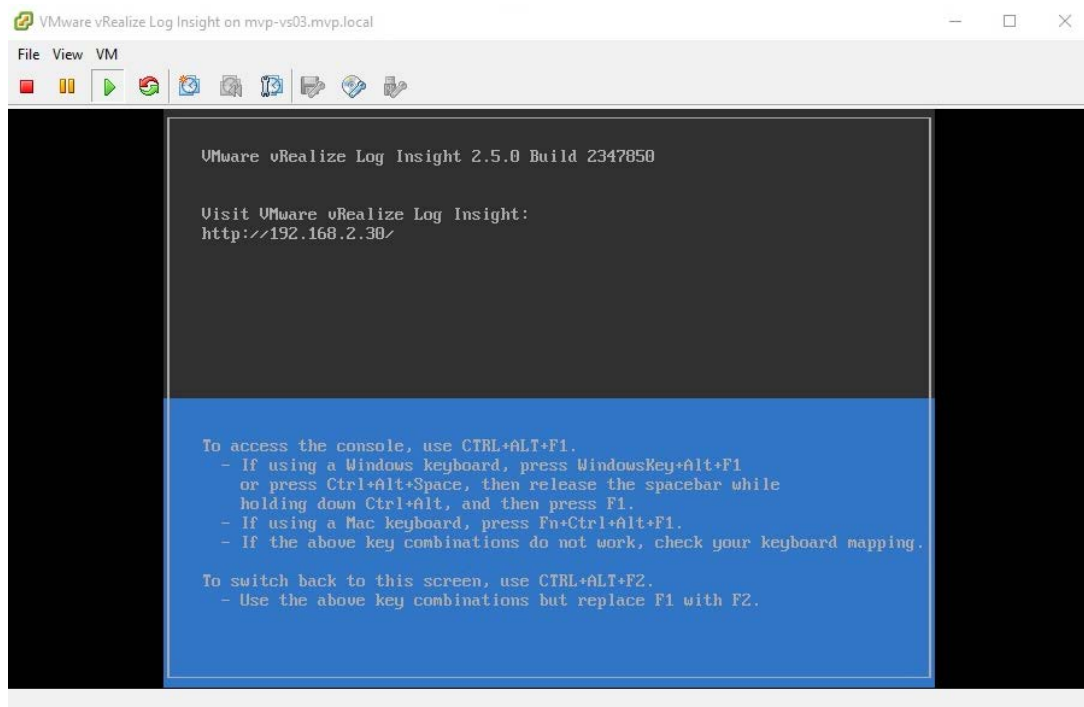


Configure vRealize Log Insight

1. Go The Log Insight Address Display in Vsphere Console post of deployment Log Insight.

Illustrate Example Below. Http://192.168.2.30 -



2. Open web browser and navigate to the Log Insight address and Click on Continue to this website. I.E 11- Screenshot.



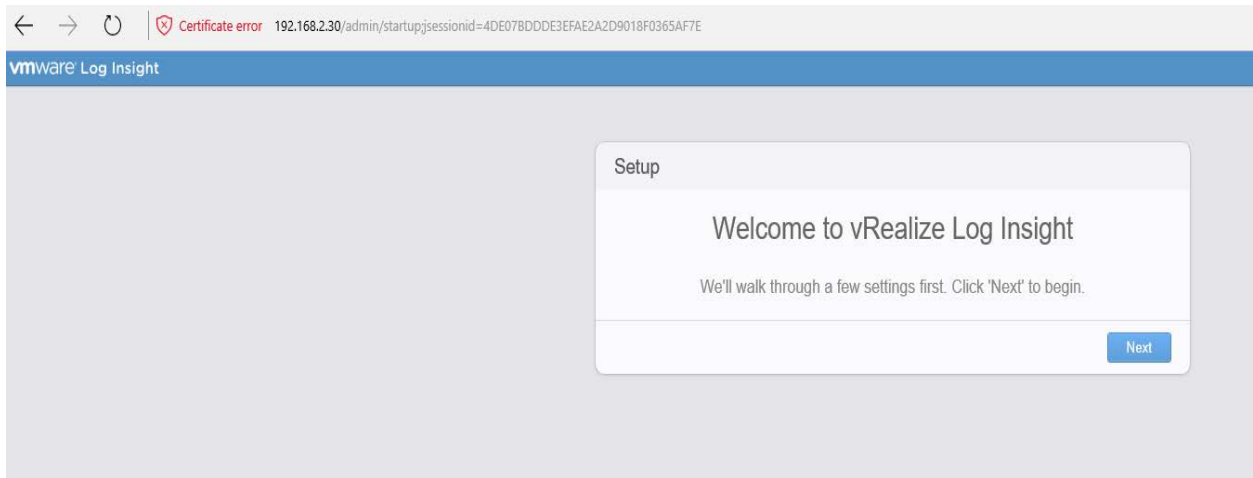
There is a problem with this website's security certificate

We recommend that you close this webpage and do not continue to this website.

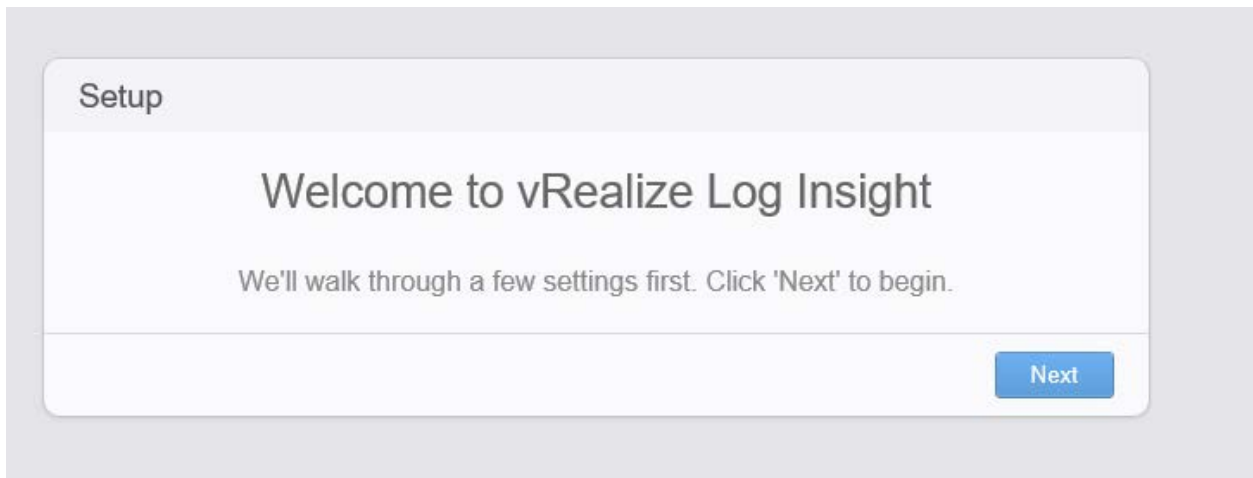
The security certificate for this site doesn't match the site's web address and may indicate an attempt to fool you or intercept any data you send to the server.

[Go to my homepage instead](#)

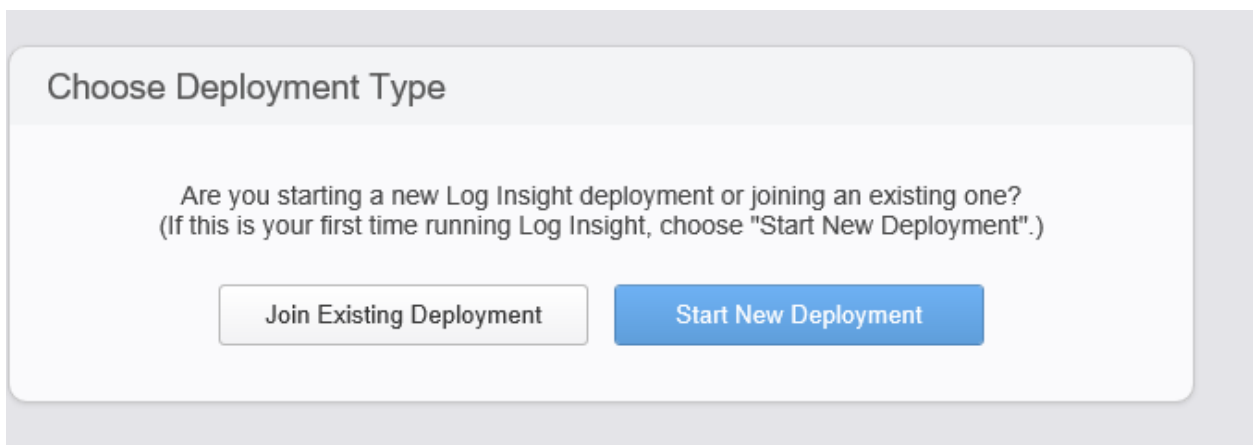
[Continue to this webpage \(not recommended\)](#)



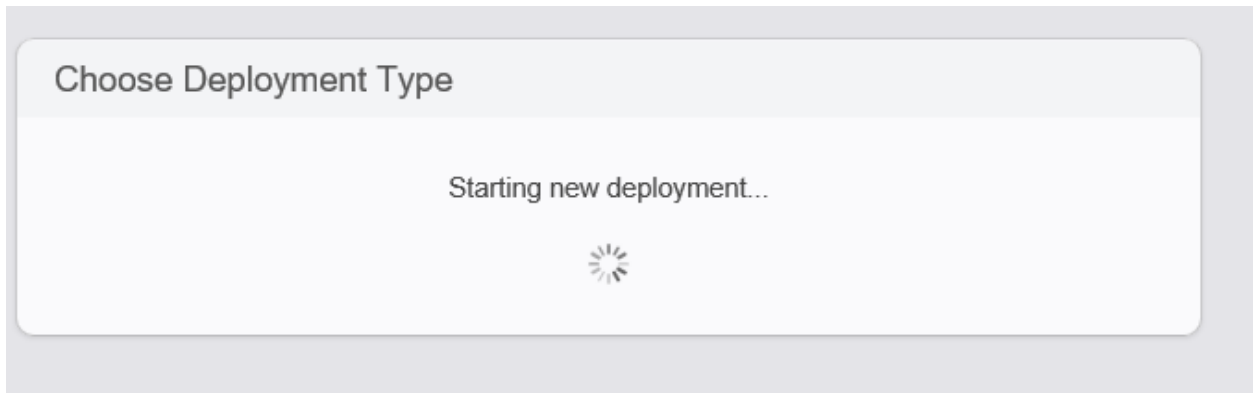
3. Click Next under the Setup Banner Page ..



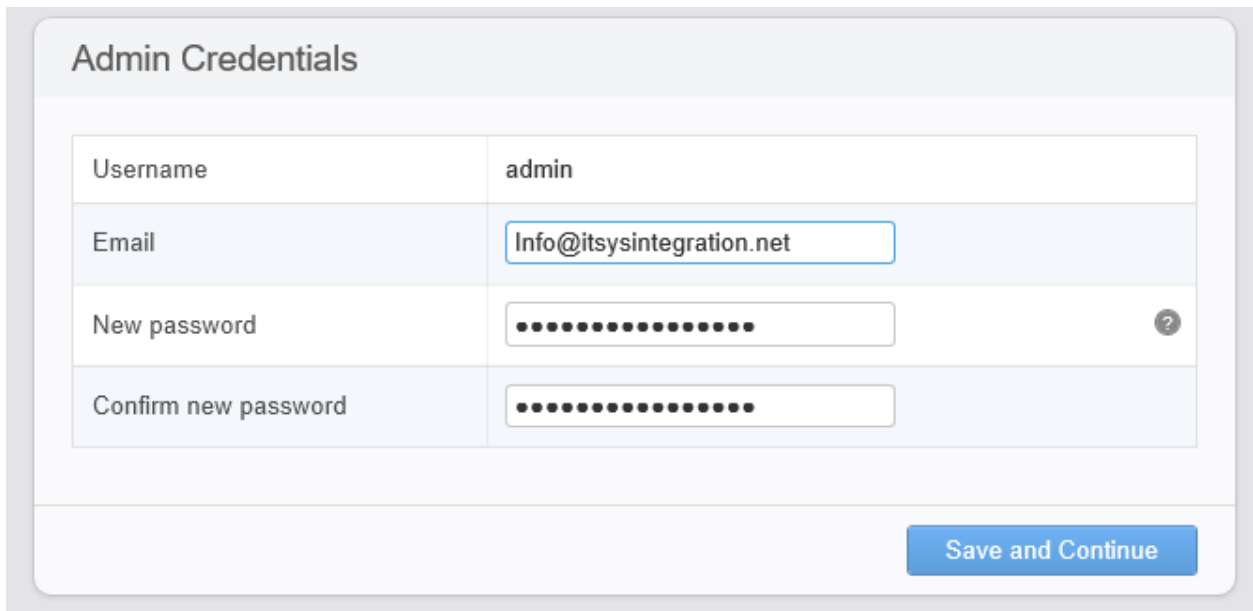
4. Choose Deployment Type- Select Default - **Start New Deployment.**



Status Message will display -- Starting new deployment. ...



5. Input **Username** , **Email** , **New Password** and **Confirm Password Values** and **Click Save and Continue**.

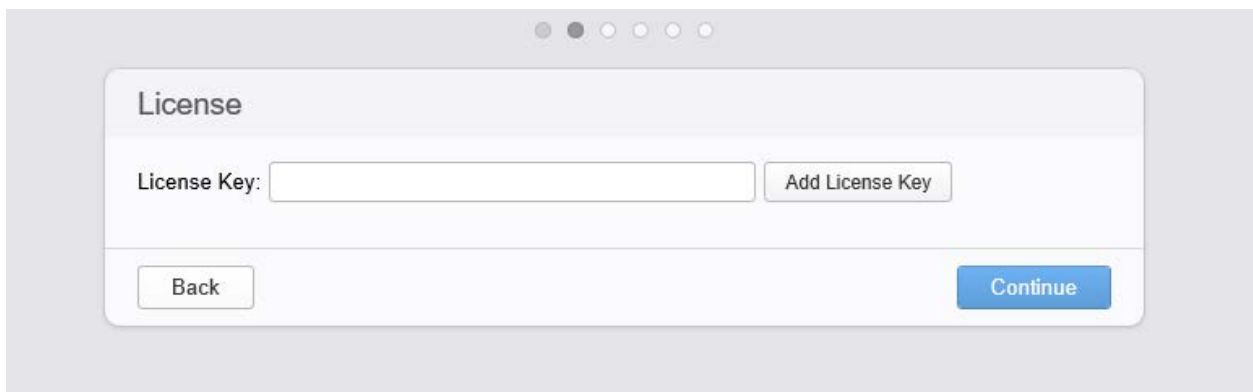


The screenshot shows a form titled "Admin Credentials". It contains four input fields:

Username	admin
Email	<input type="text" value="Info@itsysintegration.net"/>
New password	<input type="password" value="....."/> ?
Confirm new password	<input type="password" value="....."/>

At the bottom right of the form is a blue button labeled "Save and Continue".

6. Add License Key xxxxxxxxxx. Click Add License Key and Continue.



The screenshot shows a dialog box titled "License". It contains a "License Key:" label followed by an empty input field and an "Add License Key" button. At the bottom left is a "Back" button and at the bottom right is a blue "Continue" button.

7. Click Continue . to Confirm License Key.

License

+ Add New License Key

Key	Status	Expiration	Type ?	Quantity	
	Active				X

Back Continue

8. General Configuration- Input Notification Log Insight send system notification to and click **Save and Continue**.

General Configuration

Enter a comma-separated list of email addresses where system notifications should be sent. These notifications are generated when important system events occur (e.g., when Log Insight is about to start rotating out data because the disk is full).

Email System Notifications To

Customer Experience Improvement Program

Once per week, Log Insight will send anonymized Trace Data to VMware via encrypted email. This information allows us to create the best possible product for you. VMware will use collected information to prioritize development resources towards features and fixes that are most valuable to our customers.

For details on Trace Data and how it is used, please see the Customer Experience Improvement section of the [Online Help](#).

Send weekly Trace Data to VMware as part of the Customer Experience Improvement Program

Back Save and Continue

9. Time Configuration Settings. - Click Skip. or Select Appropriate Time.

Time Configuration

Specify a list of NTP servers to sync with or choose to sync time with the ESXi host.

Browser Time	Sep 1, 2015 10:14:44 PM UTC-07:00
Server Time	Sep 1, 2015 10:14:46 PM UTC-07:00 <small>Note: server time is displayed in the browser's time zone</small>
Sync Server Time With	NTP server (recommended) ▾
NTP Servers (comma-separated)	0.vmware.pool.ntp.org, 1.vmware.pool.ntp.org, 2.vmware.pool.ntp.org, 3.vmware.pool.ntp.org <input type="button" value="🌞"/> <small>Note: test may take up to 20 seconds per server</small>

10. Click on Test To VMware NTP default hosts.-I.E shows Test was successful. and **Click Save and Continue.**

Time Configuration

Specify a list of NTP servers to sync with or choose to sync time with the ESXi host.

Browser Time	Sep 1, 2015 10:14:44 PM UTC-07:00
Server Time	Sep 1, 2015 10:14:46 PM UTC-07:00 <small>Note: server time is displayed in the browser's time zone</small>
Sync Server Time With	NTP server (recommended) ▾
NTP Servers (comma-separated)	0.vmware.pool.ntp.org, 1.vmware.pool.ntp.org, 2.vmware.pool.ntp.org, 3.vmware.pool.ntp.org <input type="button" value="Test"/> <small>Note: test may take up to 20 seconds per server</small> 0.vmware.pool.ntp.org succeeded 1.vmware.pool.ntp.org succeeded 2.vmware.pool.ntp.org succeeded 3.vmware.pool.ntp.org succeeded

11. SMTP Configuration- Input SMTP and Sender and Click Save and Continue.

SMTP Configuration

SMTP settings are used to enable outgoing email for alerts and important system notifications.

SMTP Server	<input type="text" value="Smt.1and1.com"/>
Port	<input type="text" value="25"/>
SSL (SMTPS)	<input type="checkbox"/> ?
STARTTLS Encryption	<input type="checkbox"/> ?
Sender	<input type="text" value="info@itsysintegration.net"/> ?
Username	<input type="text" value="Optional"/>
Password	<input type="text" value="Optional"/>

12. vRealize Log Insight Setup Is Complete and Click Finish.

Setup Complete

All done!

You're now ready to start using Log Insight. Enjoy!

13. Ready To Ingest Data-

Ready to Ingest Data

Log Insight is configured and ready to collect logs. Here are some ways you can get log data into Log Insight:

Ready to Ingest Data

Log Insight is configured and ready to collect logs. Here are some ways you can get log data into Log Insight:



vSphere Integration

Log Insight can integrate with vSphere to automatically ingest events from vCenter server and logs from ESXi hosts.

[Configure vSphere integration »](#)



Agents

Log Insight has collection agents available to send files and event logs from Linux or Windows to Log Insight.

[Download and Install Agents »](#)



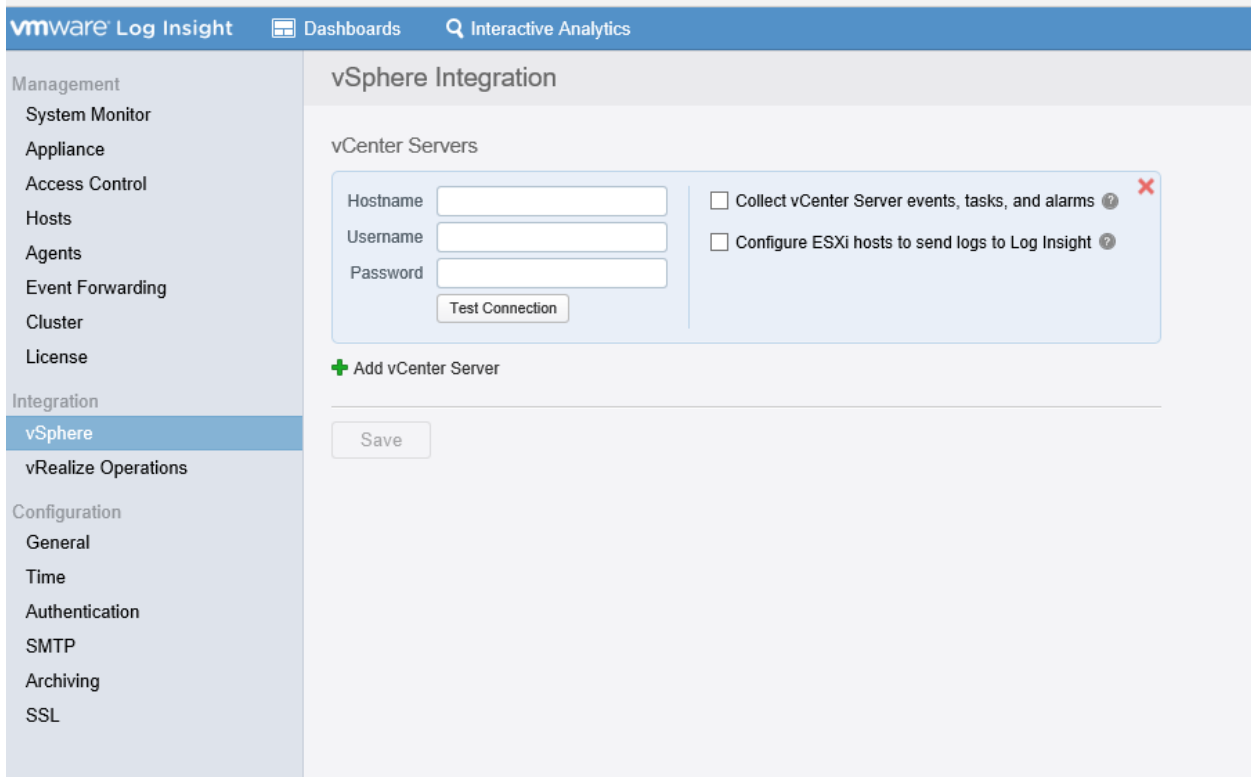
Syslog

Log Insight can ingest data from any source via syslog. Just set the Log Insight server as your syslog destination.

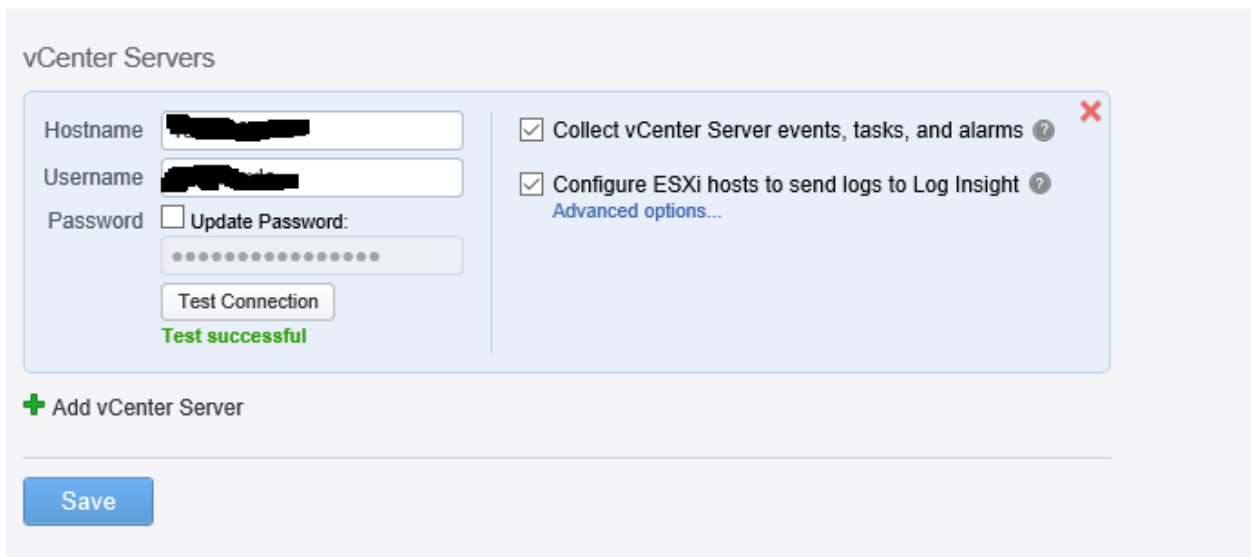
You can also visit the [Admin Page](#) to enable Active Directory, Archiving, vRealize Operations integration and more. For additional documentation, see the [Online Help](#).

13. Vsphere Integration- Vcenter or ESXI

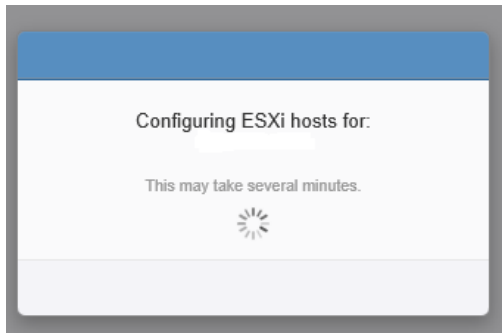
A. Click Vsphere Integration. Input Vcenter - Host name , User Name and Password.



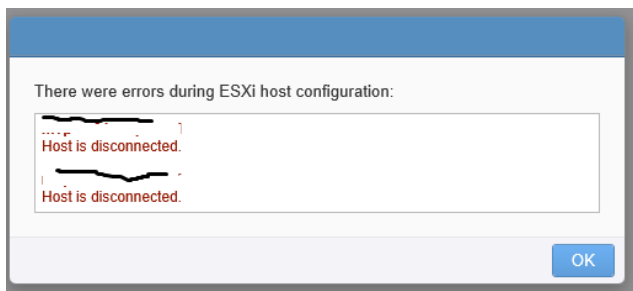
B. Click on Test To Validate Connection Vcenter Server and Click Save.



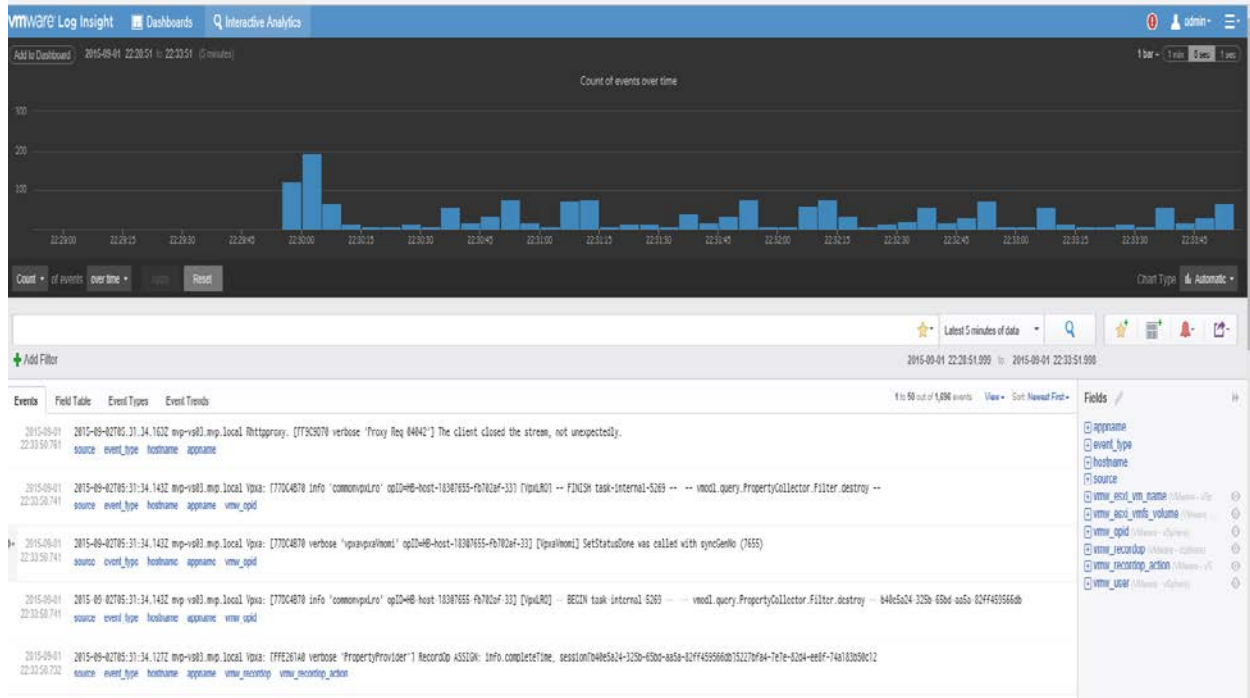
Display Status Message Configure Vsphere Integration



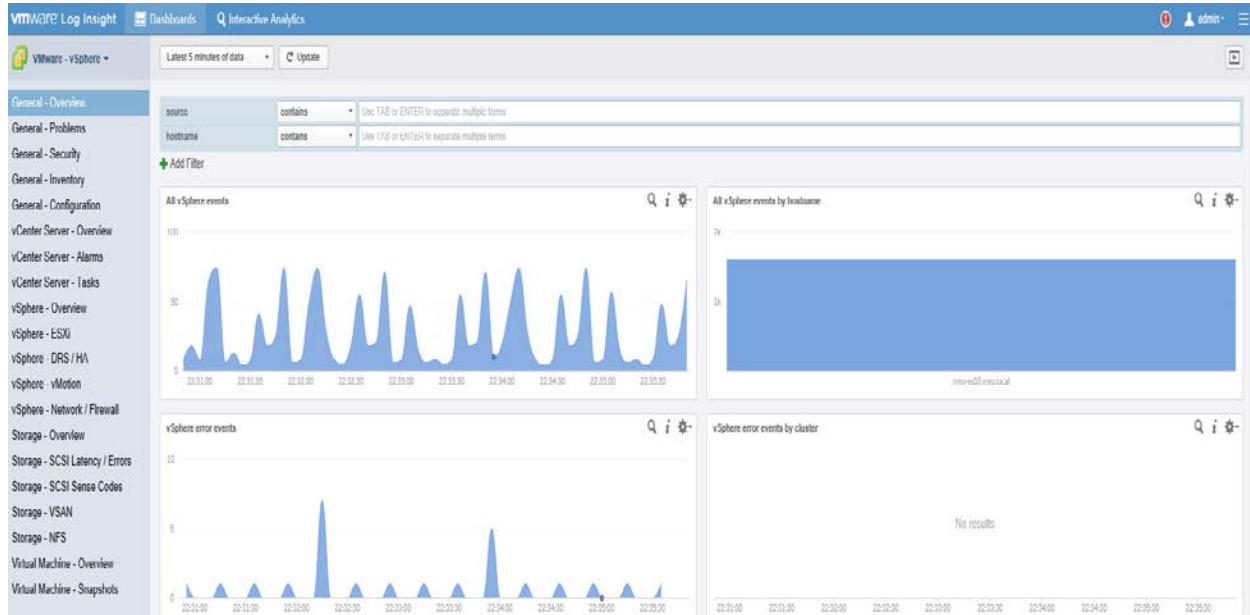
If there's any ESXi host disconnection within Vcenter - It will display the error, Just click Ok.



D. Click on Interactive Analytic Link and you will see data showing up.



E. Click on the VMware Log Insight Link on Left Hand side. View Overview of Vcenter.





This complete the Configuration of Log Insight with Vcenter.

System Monitor

vmware Log Insight 🏠 Dashboards 🔍 Interactive Analytics

Management

- System Monitor
- Appliance
- Access Control
- Hosts
- Agents
- Event Forwarding
- Cluster
- License

Integration

- vSphere
- vRealize Operations



Configuration

- General
- Time
- Authentication
- SMTP
- Archiving
- SSL




System Monitor

Resources | Active Queries | Statistics | 🔄



CPU (4 Cores)

Last 5 minutes:  100%
Last 24 hours:  100%



Memory and Swap

Memory:  2.2 GB of 7.8 GB
Swap:  0 B of 4.0 GB
Last 24 hours:  100%

Total Read and Write Operations

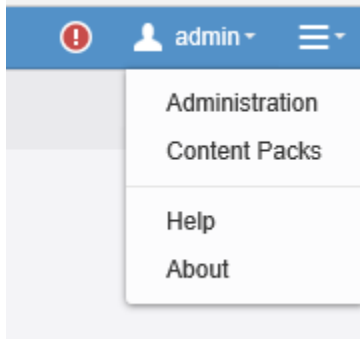
Last 5 minutes:  19
Last 24 hours:  9
Legend: Reads/sec (green), Writes/sec (orange)

Bytes Read and Written

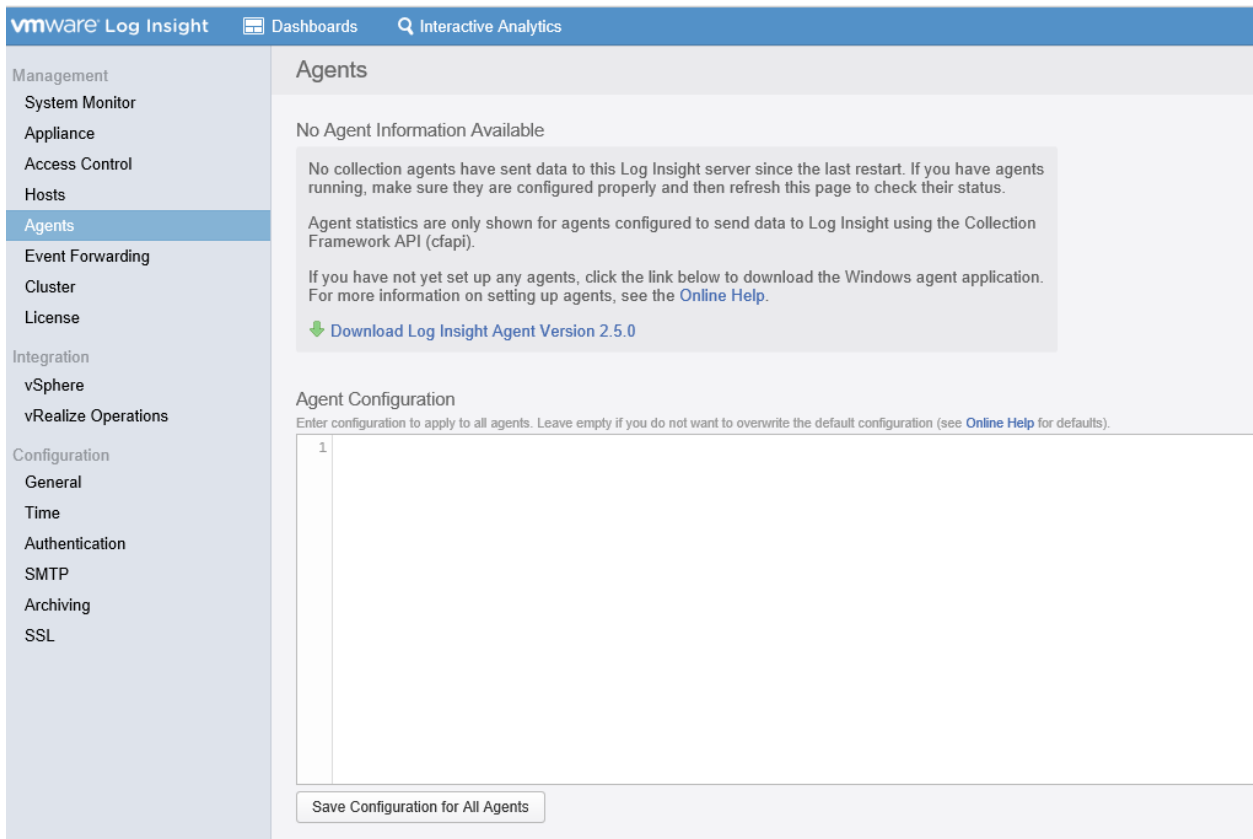
Last 5 minutes:  303 KB
Last 24 hours:  115 KB
Legend: Bytes read/sec (green), Bytes written/sec (orange)

14. Configure Agent to Windows or Linux System.

A. Click Administration- Agent.



B. Click Agents- Link.



C. Click Download Log Insight Agent Version 2.5.0

No Agent Information Available

No collection agents have sent data to this Log Insight server since the last restart. If you have agents running, make sure they are configured properly and then refresh this page to check their status.

Agent statistics are only shown for agents configured to send data to Log Insight using the Collection Framework API (cfapi).

If you have not yet set up any agents, click the link below to download the Windows agent application. For more information on setting up agents, see the [Online Help](#).

[Download Log Insight Agent Version 2.5.0](#)



D. Message Display - Selection Windows and Linux Version

Download Log Insight Agent Version 2.5.0

- Windows MSI (32-bit/64-bit)
- Linux RPM (32-bit/64-bit)
- Linux DEB (32-bit/64-bit)
- Linux BIN (32-bit/64-bit)

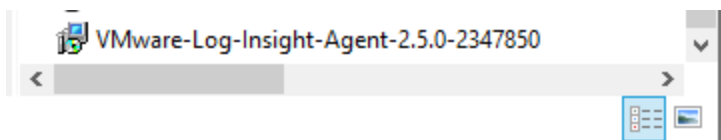
E. Click on Window MSE- 32 bit/64bit

VMware-Log-Insight-Agent-2.5.0-2347850.msi finished downloading.

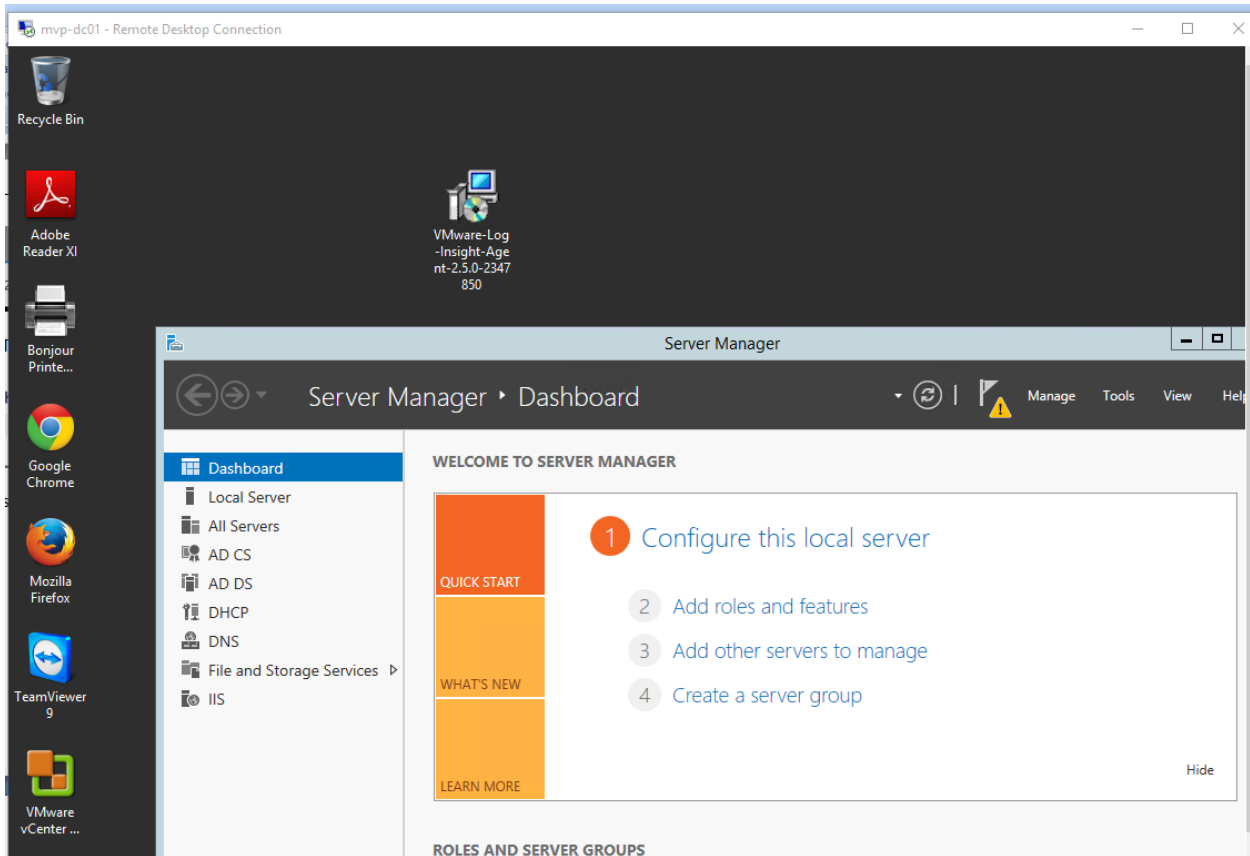
Run View downloads

F. Click View Download To Copy Window MSE- 32 bit/64bit- Destination Window Systems.

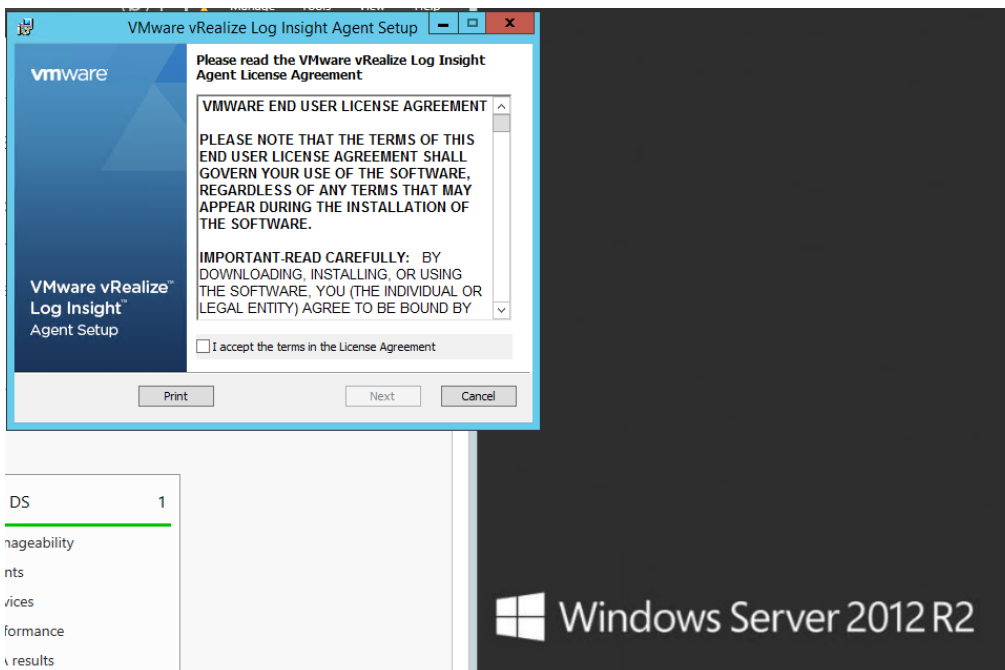
VMware-Log-Insight-Agent-2.5.0-2347850



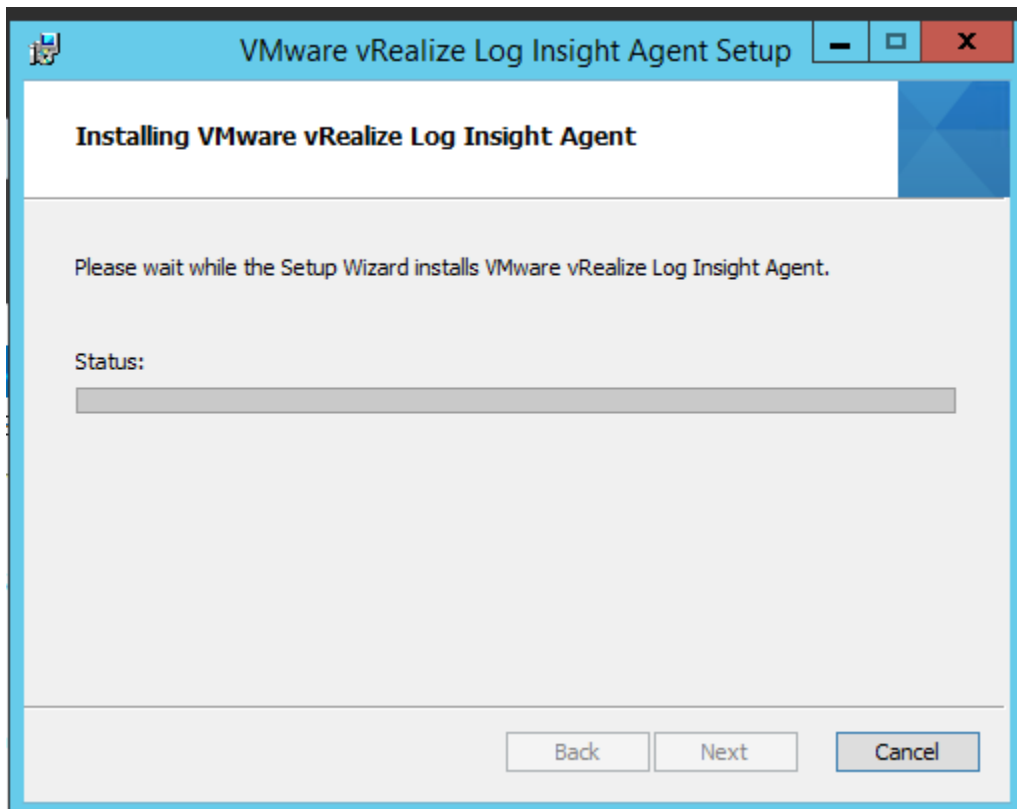
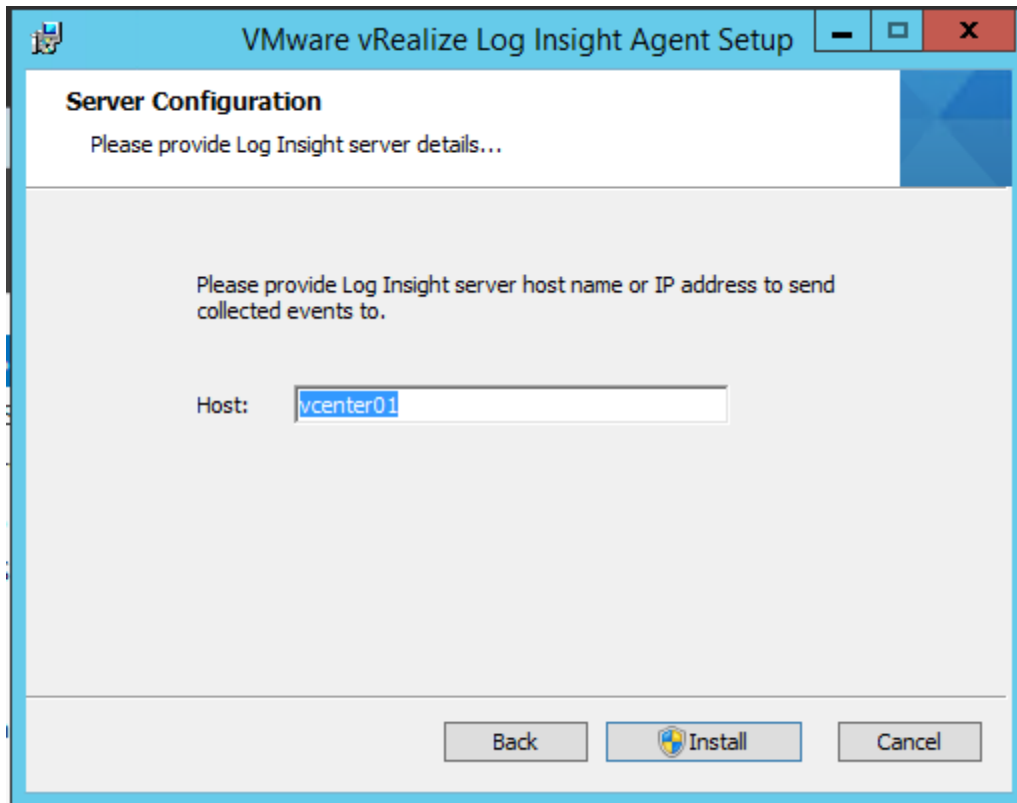
G. Copy Vmware-Log-Insight-Agent.MSi and Run -Locally.



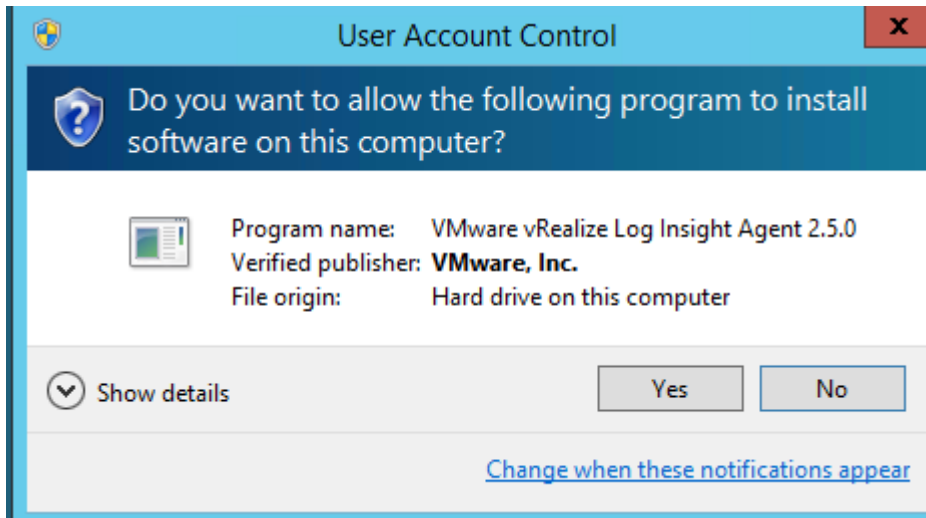
H. Click I Accept - Log Insight Agent License Agreement and Click Next.



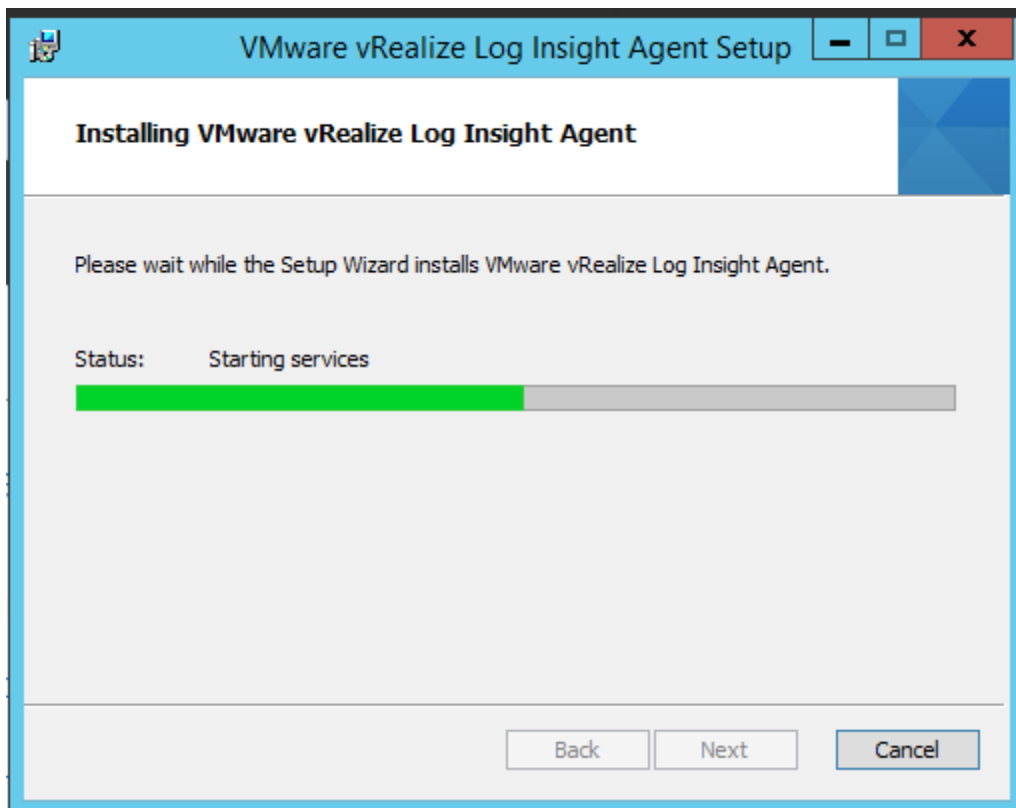
I. Input Server Configuration- Host: Vcenter01 and Click Install.



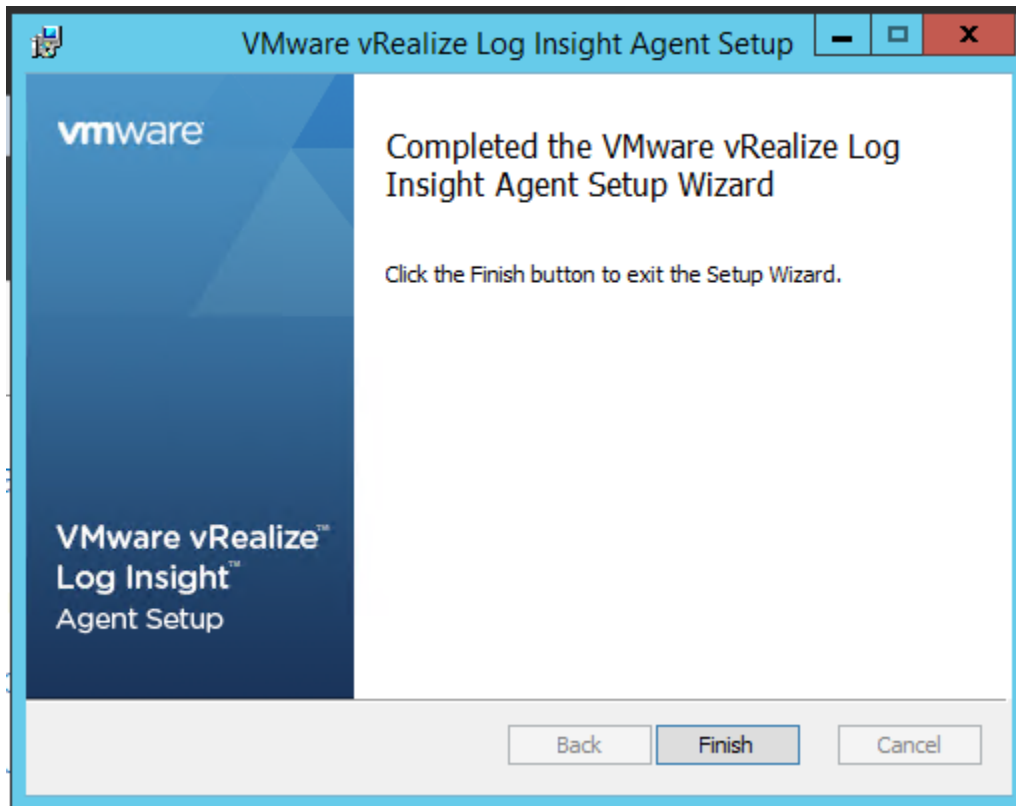
J. Click Yes Allow Agent 2.4 Installation.



Installation Progress Status.

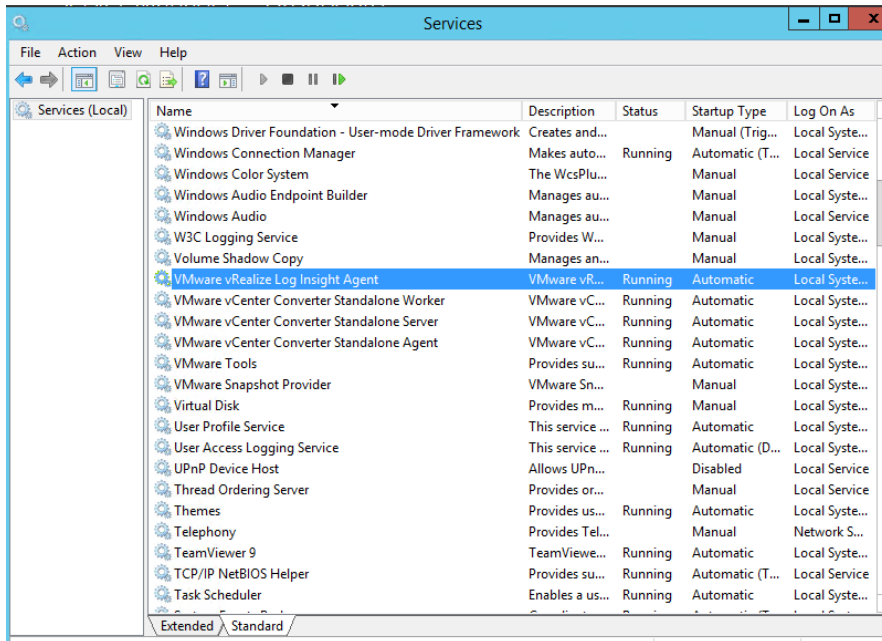


L. Click Finish To Complete Installation.



No restart of the Windows system required.

Log Insight Windows Services is automatically added post of installation and active.



You can download other Agent version - For example, Linux systemes.



Reference

Configure vRealize Log Insight

<http://pubs.vmware.com/log-insight-15/index.jsp#com.vmware.log-insight.getting-started.doc/GUID-950D4050-ABA2-4375-A381-47187DC8C674.html>