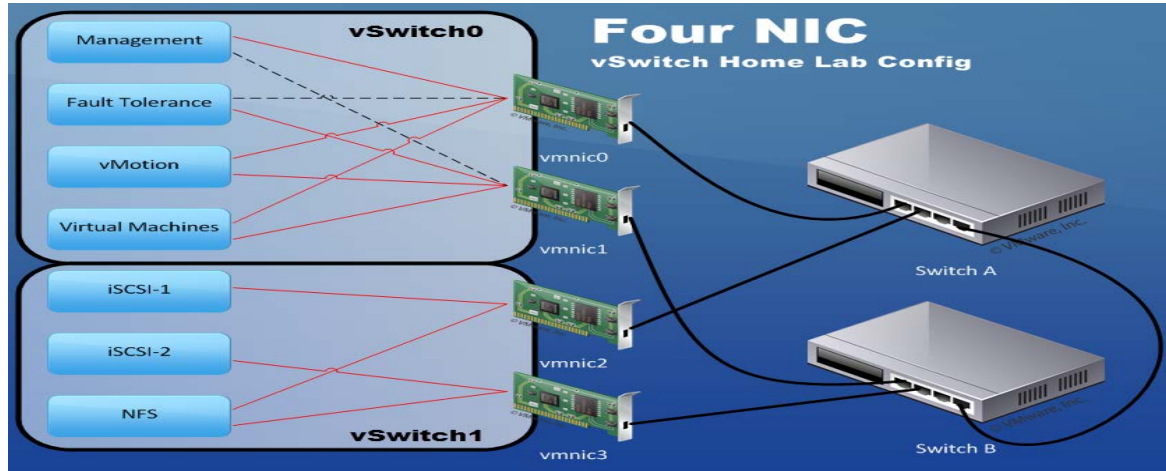


I. Standard Virtual Switch

Title :Create a Vswitch(standard switch) on ESXI Host.

Vswitch (Standard Switch) Interface Need to have functional ESXI to Host VM hosts.



Management, Vmotion, NFS and Virtual Machine Interface as stated to have functional ESXI server to host VM host.

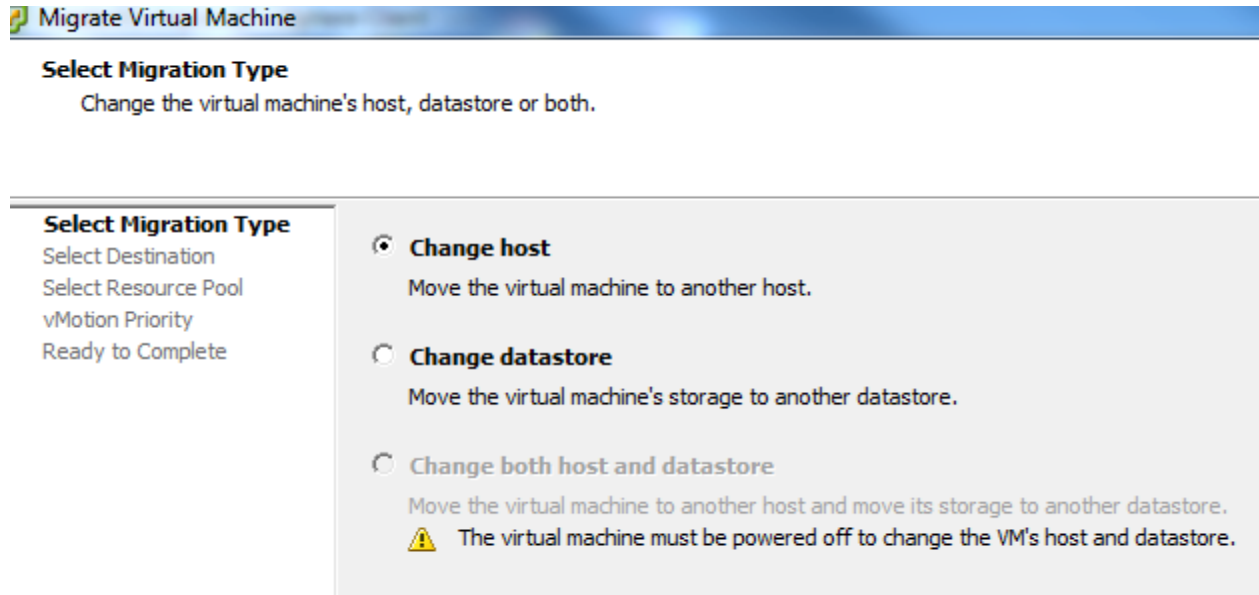
2. Break down of each interfaces: (Not we will only illustrate Management, Vmotion, and NFS in this demonstration.)

a. Management = ESXI Host FQDN and IP. I.E ESXI host Screen

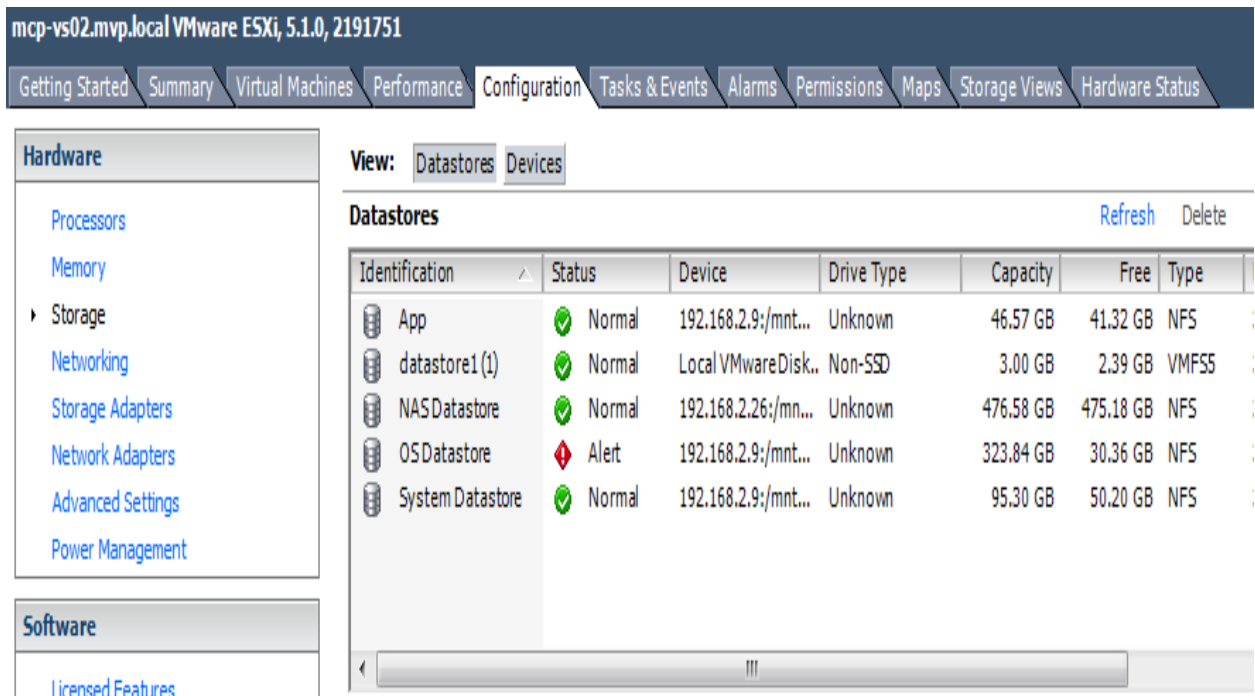
```
VMware ESXi 6.0.0 (VMKernel Release Build 2494585)
VMware, Inc. VMware Virtual Platform
2 x Intel(R) Xeon(R) CPU E7330 @ 2.40GHz
8.2 GiB Memory

Download tools to manage this host from:
http://192.168.2.232/ (DHCP)
http://[fe80::250:56ff:fe94:54a71]/ (STATIC)
```

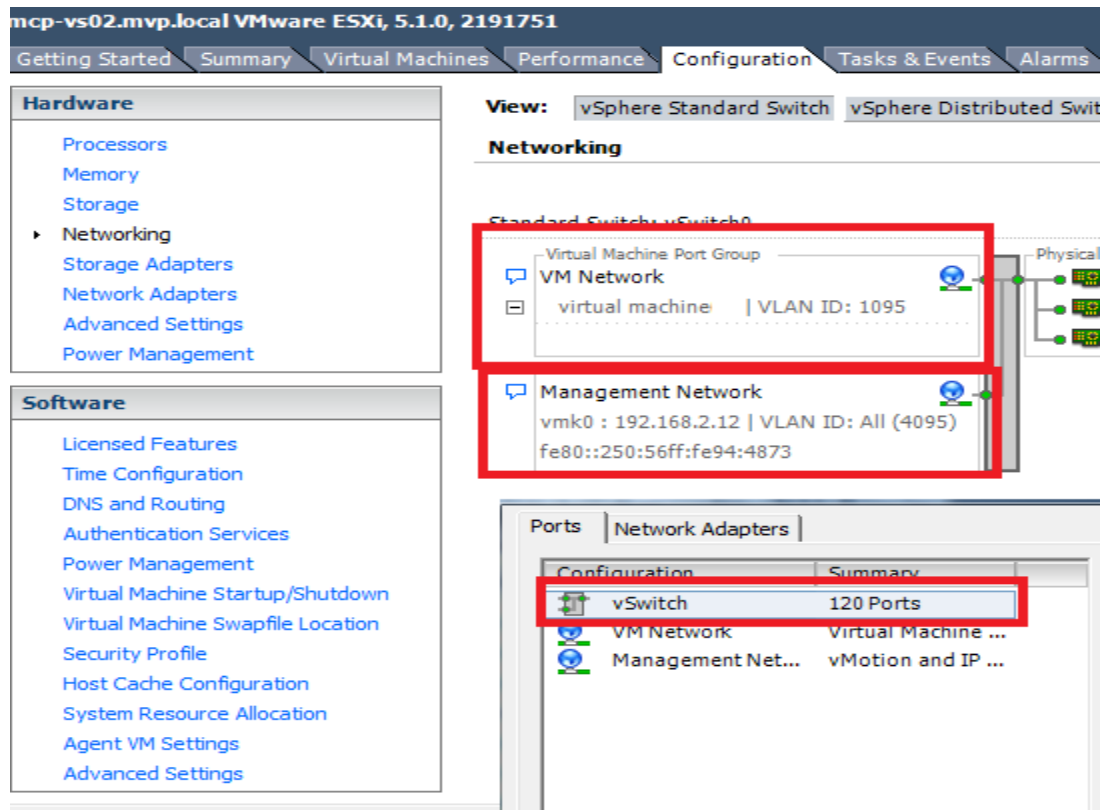
b. Vmotion= In event of failure a VM Host is move(Vmotion aka migrated) over an other ESXI host within the Cluster. **Vmotion is also used migrate VM host over another datastore.**



C. NFS Interface-Network File System Protocol (In this demonstration will use NFS as datastore mount method.) This is required to mount datastore for Vm host to be deployed to.



3. By default post of a complete ESXI host build the Management network and VM Network Interface/Portgroup are created with default port of 128.



4. Reserve static IP Address from your DNS for each interface.

For example:

Management= ESXi Host IP address.

192.168.2.12

Vmotion Interface:

192.168.2.151

NFS interface:

192.168.2.140

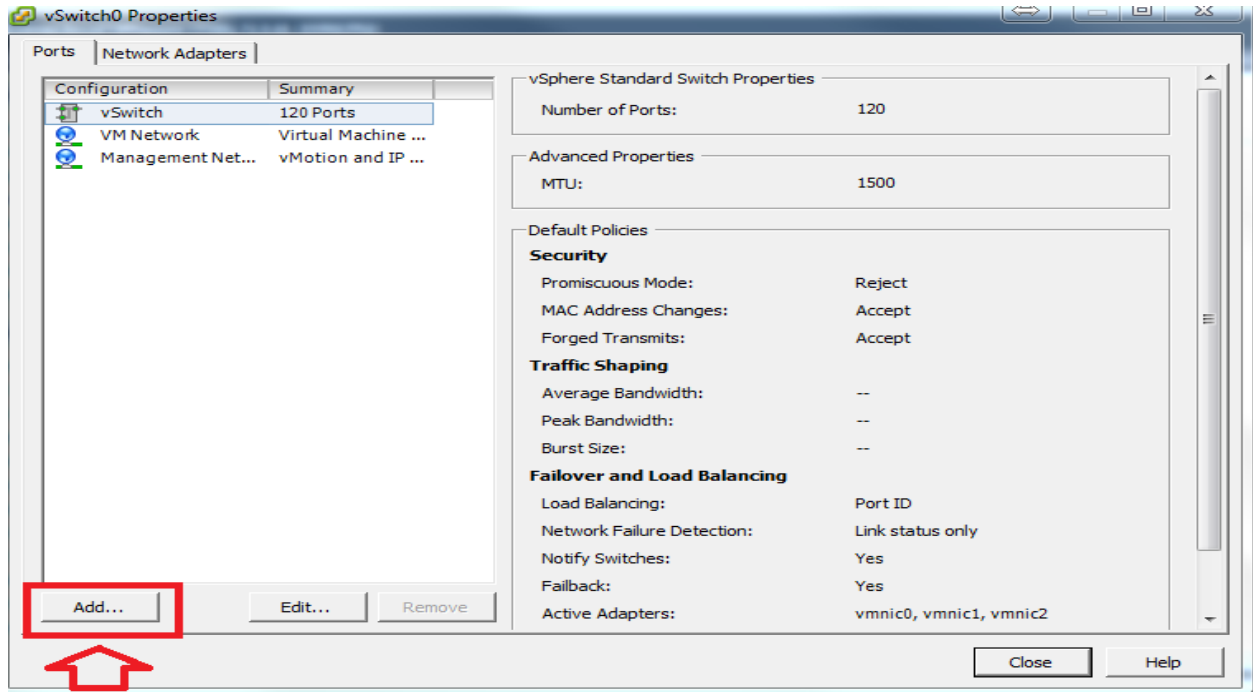
Note typical in a enterprise organization there will be requirement for VLAN Tagging. So Vlan tagging will be used in the next section during the configuration.

For this demonstration will use 4095 allow all for Tagging to get practice.

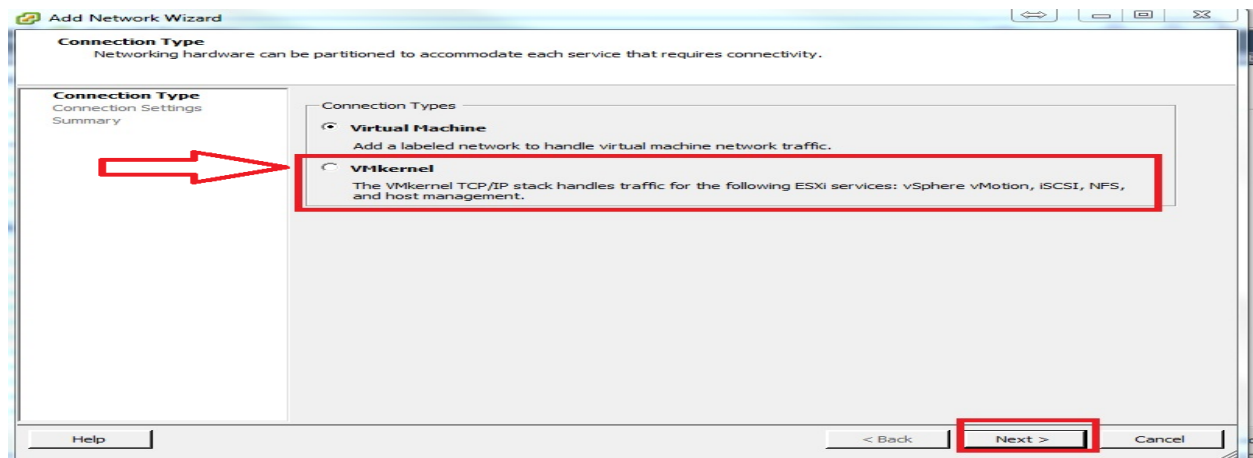
4. Creating Vswitch (Standard Switch)

A. Go to Configuration --->Networking ---->Standard Switch:vSwitch0----->Properties- Vswitch0 will prompt below screen.

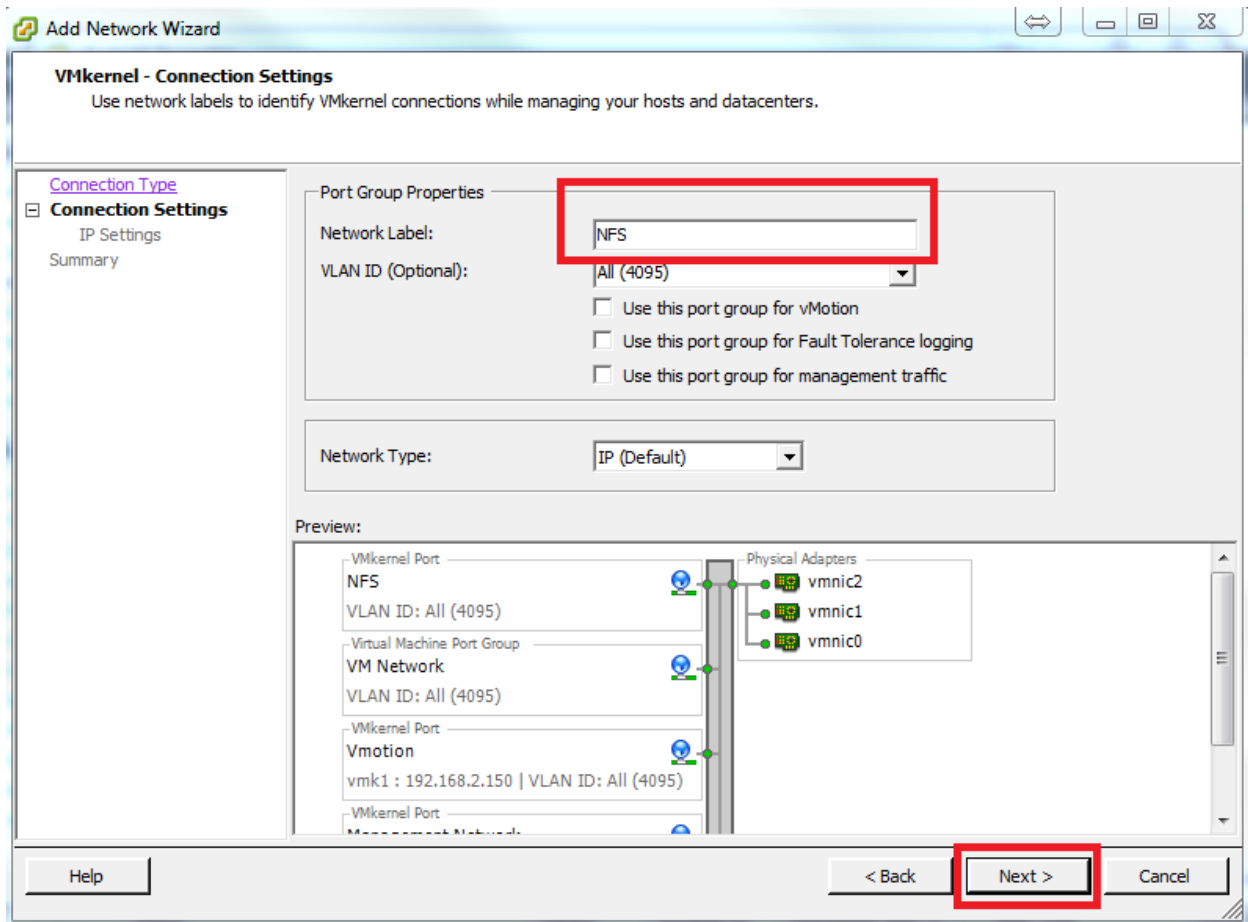
***Note both VM Network already there post completion ESXI Host Build.**



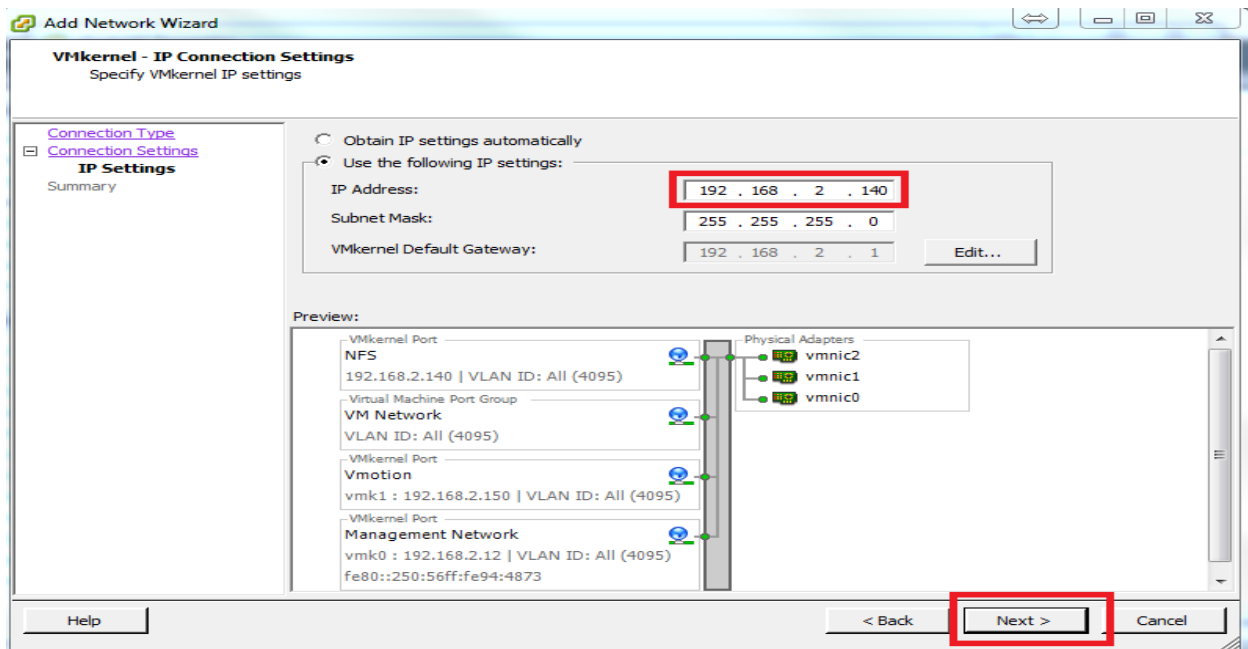
B. Click Add bottom to add NFS and Vmotion Interfaces.



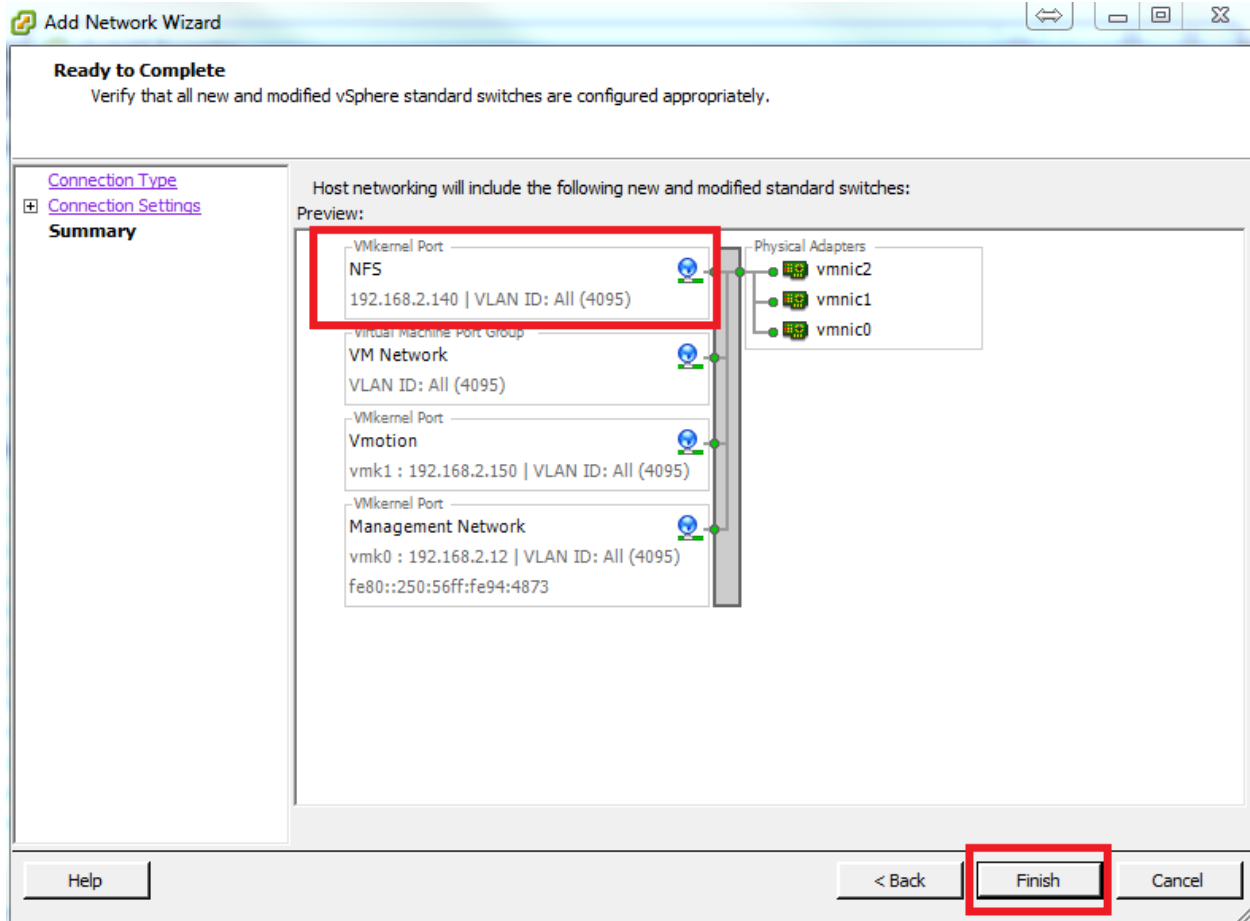
C. Select VMKernel and Next to create NFS Interface.



D. Input NFS in the Network label - Optional - Set VLAN ID: to 4095 and Click Next.

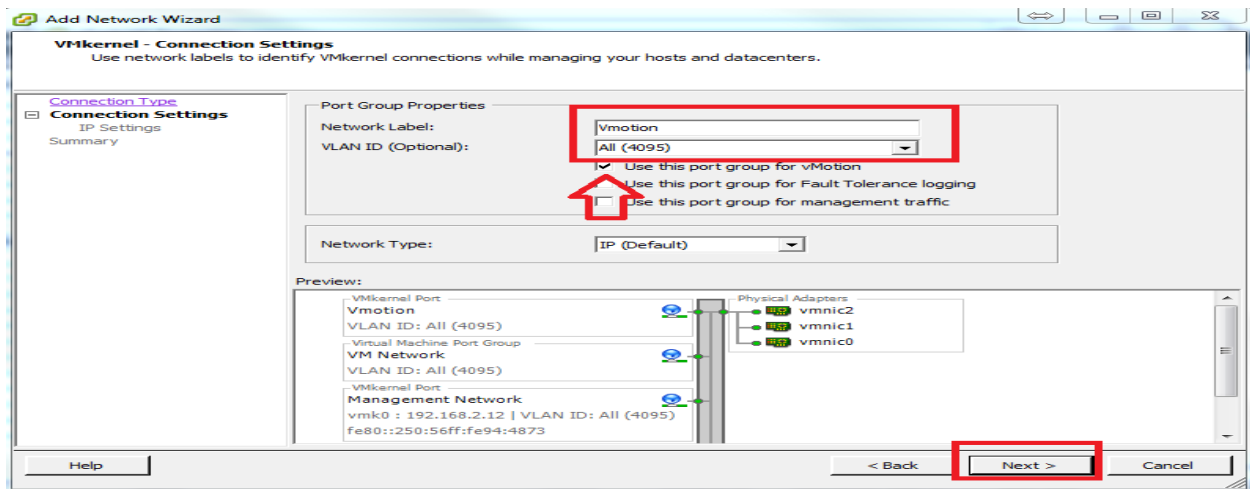


F. Input IP address for the NFS Interface and Click Next to complete NFS Interface configuration.

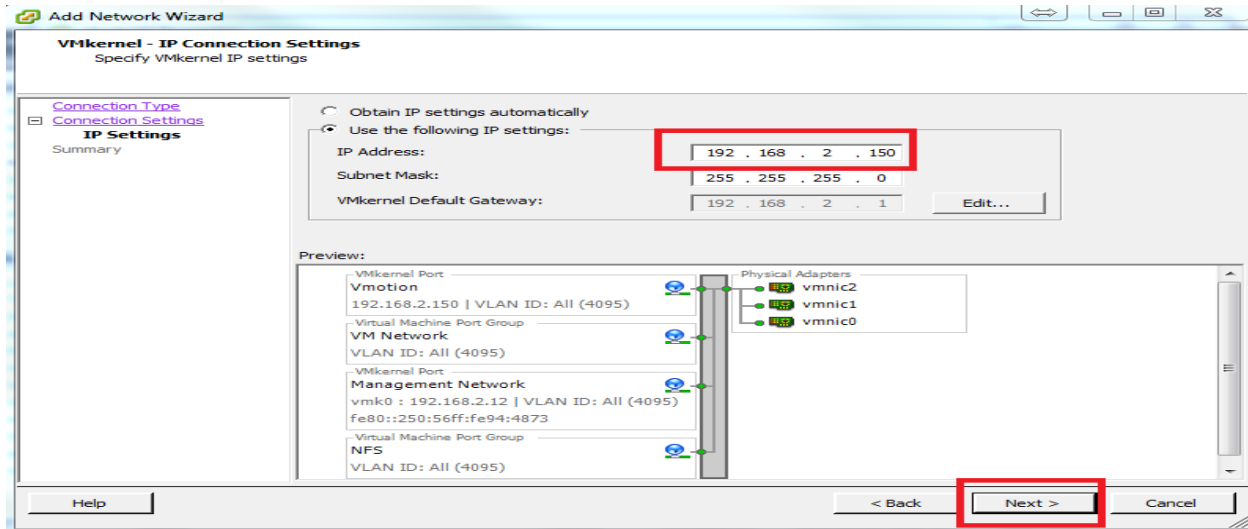


G. Confirm Newly NFS Interface is configured correctly and click finish to complete NFS interface configuration.

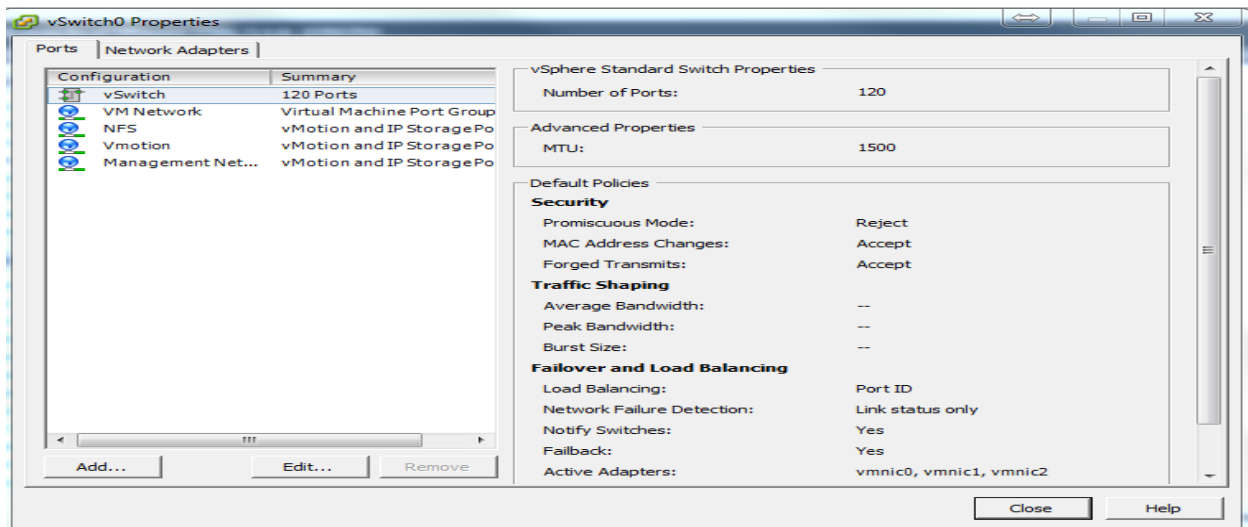
H. Create Vmotion Interface by going through the same steps as illustrated above.



***Vmotion interface will leverage for migrating VM hosts over when there 2 or more ESXI within cluster.**



I. Click Next Complete Vmotion Interface Configuration.



J. Click Close To Complete Configuration.

mcp-vs02.mvp.local VMware ESXi, 5.1.0, 2191751

Getting Started Summary Virtual Machines Performance Configuration Tasks & Events Alarms Permissions Maps Storage

Hardware

- Processors
- Memory
- Storage
- ▶ Networking
- Storage Adapters
- Network Adapters
- Advanced Settings
- Power Management

Software

- Licensed Features
- Time Configuration
- DNS and Routing
- Authentication Services
- Power Management
- Virtual Machine Startup/Shutdown
- Virtual Machine Swapfile Location
- Security Profile
- Host Cache Configuration
- System Resource Allocation
- Agent VM Settings
- Advanced Settings

View: vSphere Standard Switch vSphere Distributed Switch

Networking

Standard Switch: vSwitch0 Remove... Properties...

Virtual Machine Port Group	Physical Adapters
<ul style="list-style-type: none"> VM Network <ul style="list-style-type: none"> 1 virtual machine(s) VLAN ID: All (4095) winxptest NFS <ul style="list-style-type: none"> vmk2 : 192.168.2.140 VLAN ID: All (4095) Vmotion <ul style="list-style-type: none"> vmk1 : 192.168.2.150 VLAN ID: All (4095) Management Network <ul style="list-style-type: none"> vmk0 : 192.168.2.12 VLAN ID: All (4095) fe80::250:56ff:fe94:4873 	<ul style="list-style-type: none"> vmnic2 1000 Full vmnic1 1000 Full vmnic0 1000 Full

This above illustration of Standard Switch: vSwitch0 Configuration.