



IT Systems Integration

Open Filer -Free NAS Solution For ESXI Lab Environment.

Prepared By
IT Systems

Version History

Version	Date	Notes
1.0	12/06/2014	Initial Release

Table of Contents

1	Introduction.....	3
1.1	Target Audience/Purpose/Scope:.....	3
1.2	Scope of the document:.....	3
1.3	Prerequisites requirements	3
2	OpenFiler 2.99.....	3
2.1.1	Openfiler 2.99 NAS/SAN Installation	3
2.2	Click Next to proceed with installation.	4
2.3	Click Yes on erasing all data?	4
2.4	Click Next to continue with installation.	5
2.5	Click Yes to proceed with installation.	5
2.6	Click Edit to change Network IP setting to static or keep default DHCP	6
2.7	Create Static Reserve ration for new SAN Host.....	6
2.8	Input newly Static IP Reservation . I.E Above. 192.168.2.26 Prefix/24- Gateway, Primary and Secondary DNS and click Next.	7
2.9	Select Time zone where Openfiler host resides . i.e PST. LAX.	7
2.10	Set the root password for Openfiler Host.	8
2.11	Begin with Openfiler Installation.	8

1 Introduction

1.1 Target Audience/Purpose/Scope:

This document is targeted installation of Openfiler NAS solution for ESXI-Network File System(NFS):

The purpose and scope in implementing Openfiler is test/check other VMware vSphere server 5.X advanced features:

- Storage VMotion,
- VMware High Availability (VMHA),
- VMware Distributed Resource Scheduler (DRS).

1.2 Scope of the document:

Cover only Openfiler Installation.

1.3 Prerequisites requirements

Openfiler ISO 2.99 -www.openfiler.com

VMware Workstation 10x or Oracle Virtual Box.

Min CPU, RAM and Disk requirements

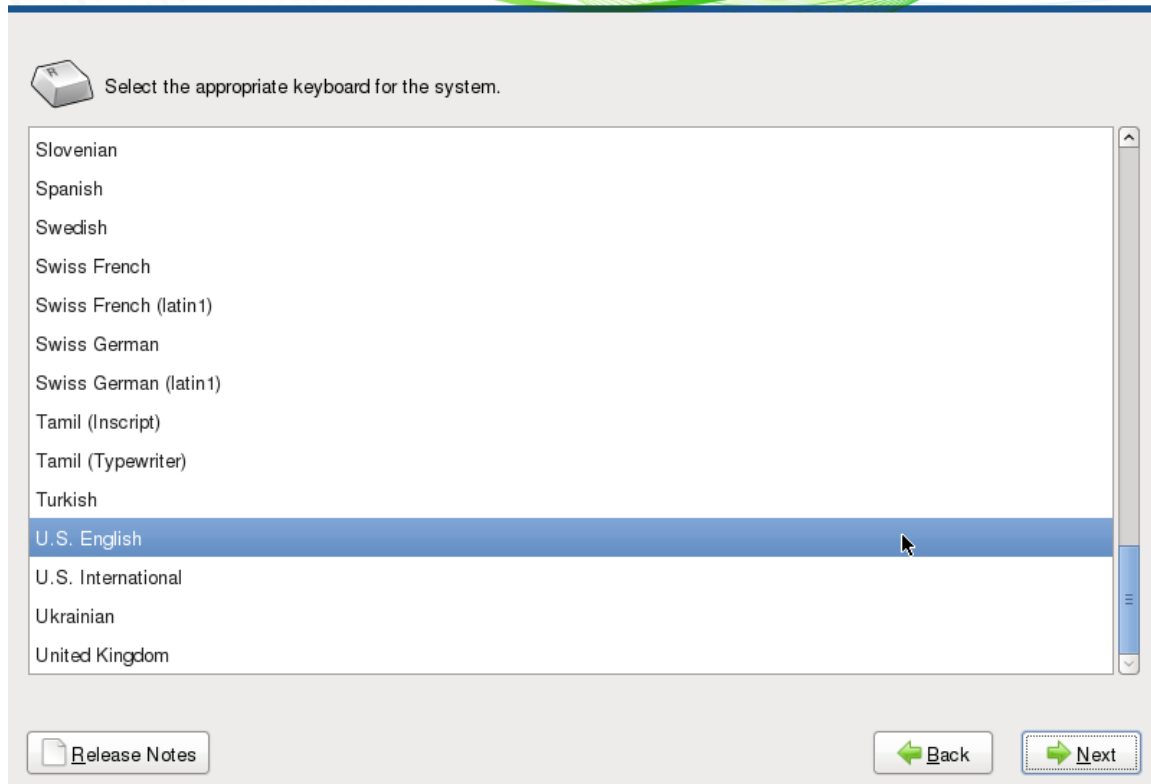
CPU x 1, RAM 256 to 512 MB, and Disk 10 G depending how many NFS NAS data store x

2 OpenFiler 2.99

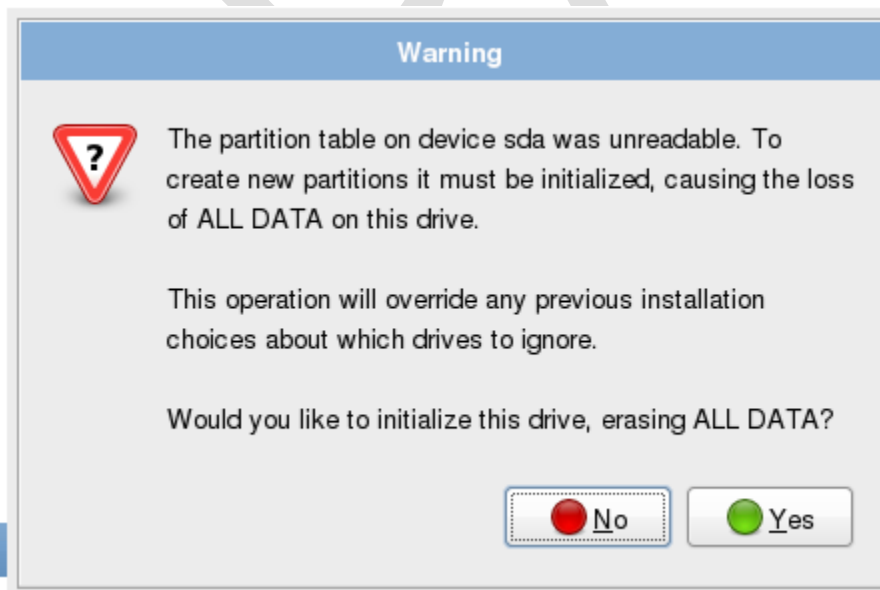
2.1.1 Openfiler 2.99 NAS/SAN Installation

We will provide illustration of the a graphical installation steps for OpenFiler::

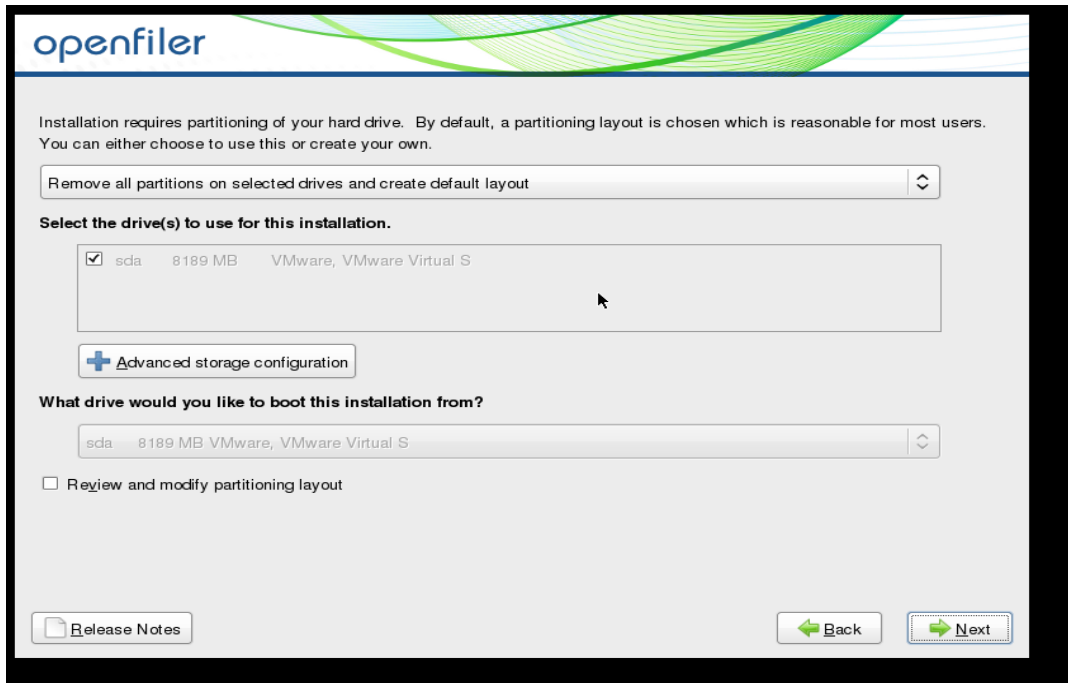




2.2 Click Next to proceed with installation.



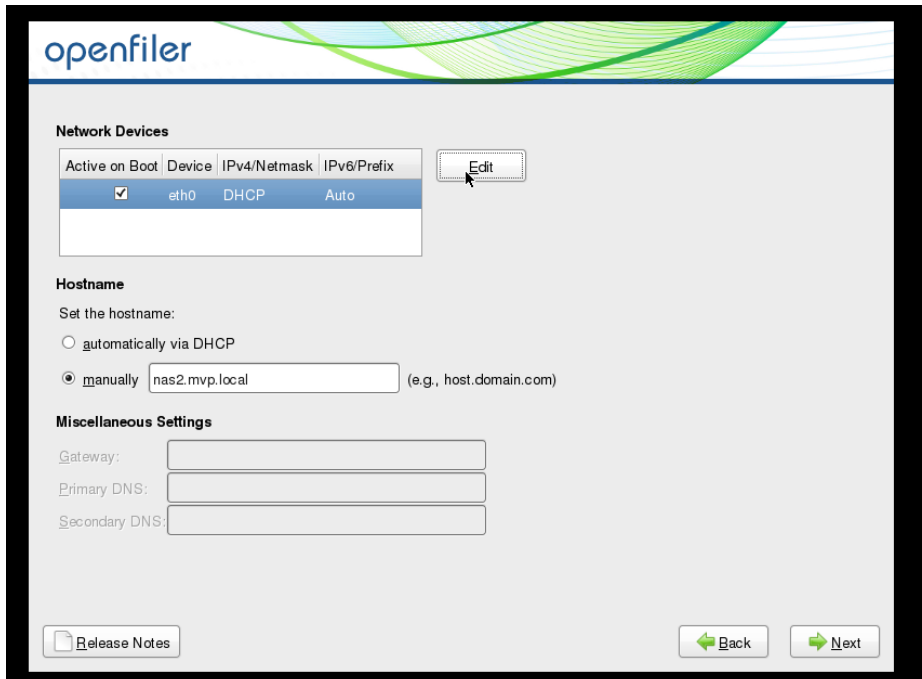
2.3 Click Yes on erasing all data?



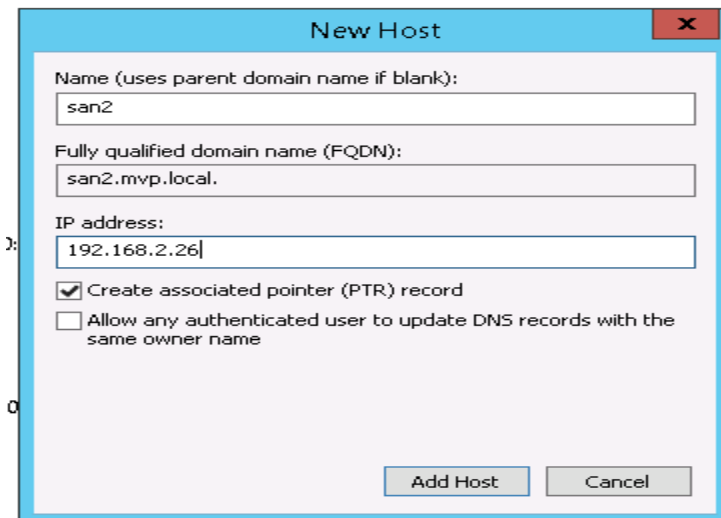
2.4 Click Next to continue with installation.



2.5 Click Yes to proceed with installation.



2.6 Click Edit to change Network IP setting to static or keep default DHCP.



2.7 Create Static Reservation for new SAN Host.

I.E above.

openfiler

Network Devices

Active on Boot	Device	IPv4/Netmask	IPv6/Prefix	Edit
<input checked="" type="checkbox"/>	eth0	192.168.2.26/24	Auto	

Hostname

Set the hostname:

automatically via DHCP

manually (e.g., host.domain.com)

Miscellaneous Settings

Gateway:

Primary DNS:

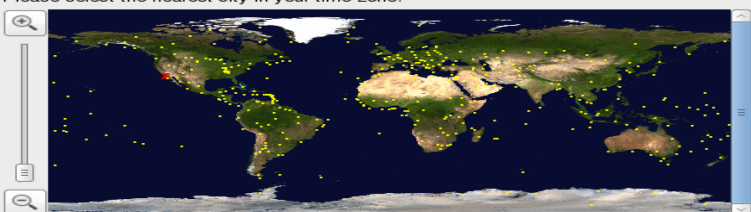
Secondary DNS:

[Release Notes](#)

**2.8 Input newly Static IP Reservation . I.E Above.
192.168.2.26 Prefix/24- Gateway, Primary and
Secondary DNS and click Next.**

openfiler

Please select the nearest city in your time zone:

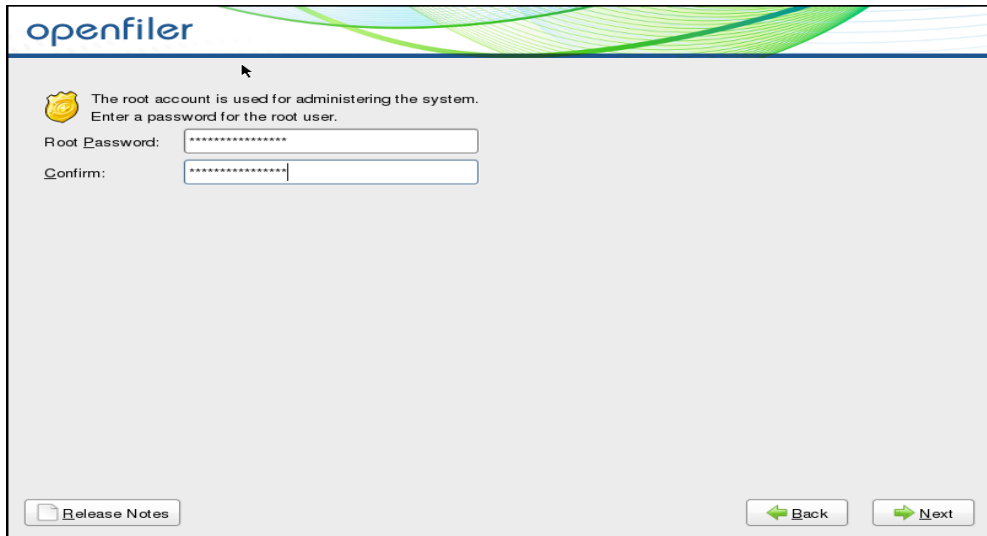


Selected city: Los Angeles, America (Pacific Time)

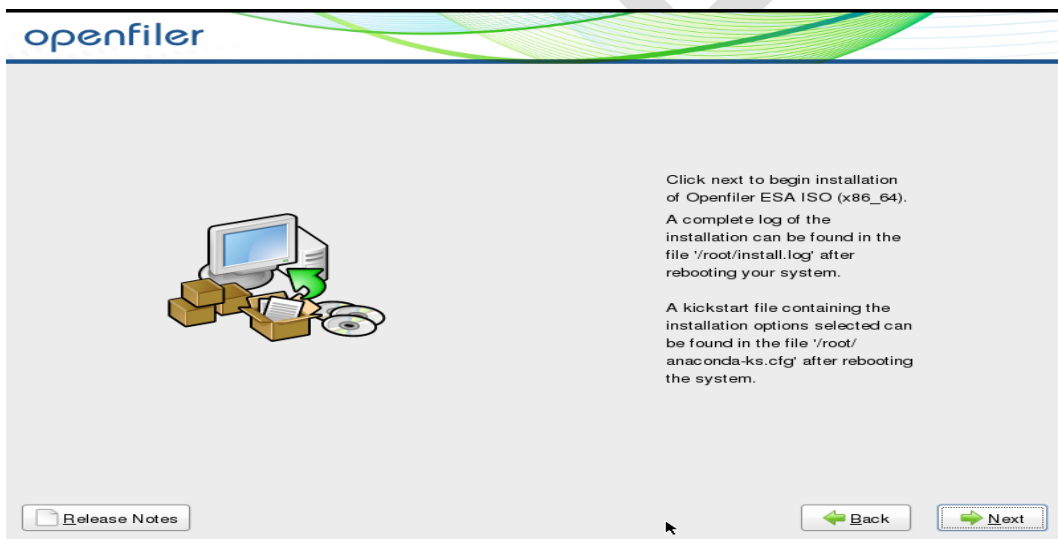
System clock uses UTC

[Release Notes](#)

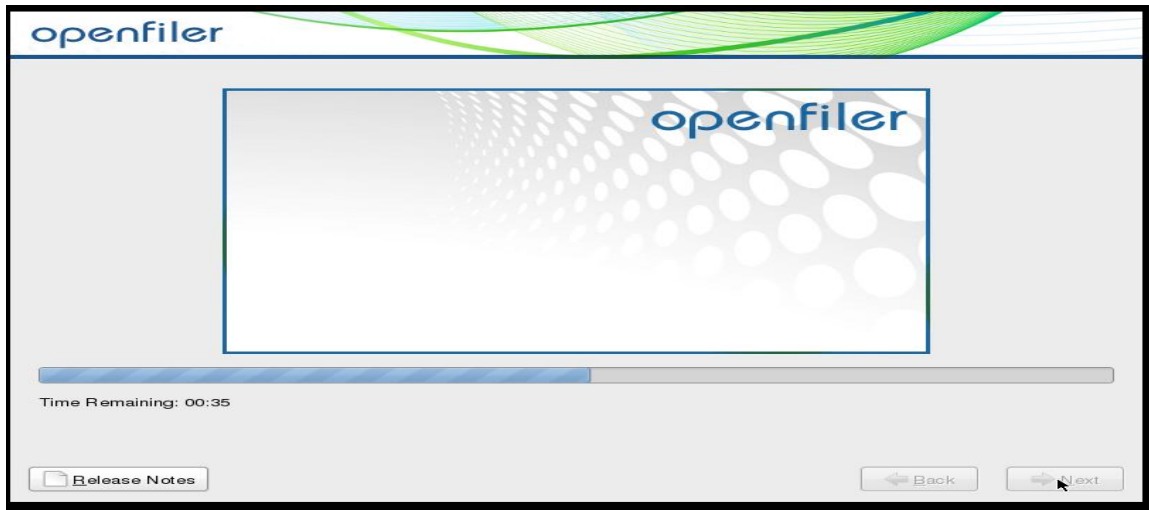
**2.9 Select Time zone where Openfiler host resides . i.e
PST. LAX.**



2.10 Set the root password for Openfiler Host.



2.11 Begin with Openfiler Installation.



2.12 Openfiler Installation Completed Screen.

```

  _/_  _/_/_  _/_/_  /  /  /  /  /  /  /  /  /  /
    /
   /

-----
:      Commercial Support: http://www.openfiler.com/support/
: Administrator Guide: http://www.openfiler.com/buy/administrator-guide
: Community Support: http://www.openfiler.com/community/forums/
: Internet Relay Chat: server: irc.freenode.net   channel: #openfiler
:-----
:      (C) 2001-2011 Openfiler. All Rights Reserved.
: Openfiler is licensed under the terms of the GNU GPL, version 2
: http://www.gnu.org/licenses/gpl-2.0.html
:-----

Welcome to Openfiler ESA, version 2.99.1

Web administration GUI: https://192.168.2.26:446/

san2 login: _
```

2.13 Log into Newly Openfiler SAN.

VIA Web Admin Address I.E above. examp

[Http://192.168/.2.6:446](http://192.168.2.6:446)

Username: openfiler

Password: password

*Configure NFS Data store for ESXI is will be illustrated in different article posting.

3 Reference

3.1 Openfiler

www.Openfiler.net

3.2 Openfiler NAS/SAN Appliance/ISO

<http://www.openfiler.com/community/download>

3.3 Oracle Virtual Box

<https://www.virtualbox.org/>

3.4 Vmware Workstation

<https://www.vmware.com/>